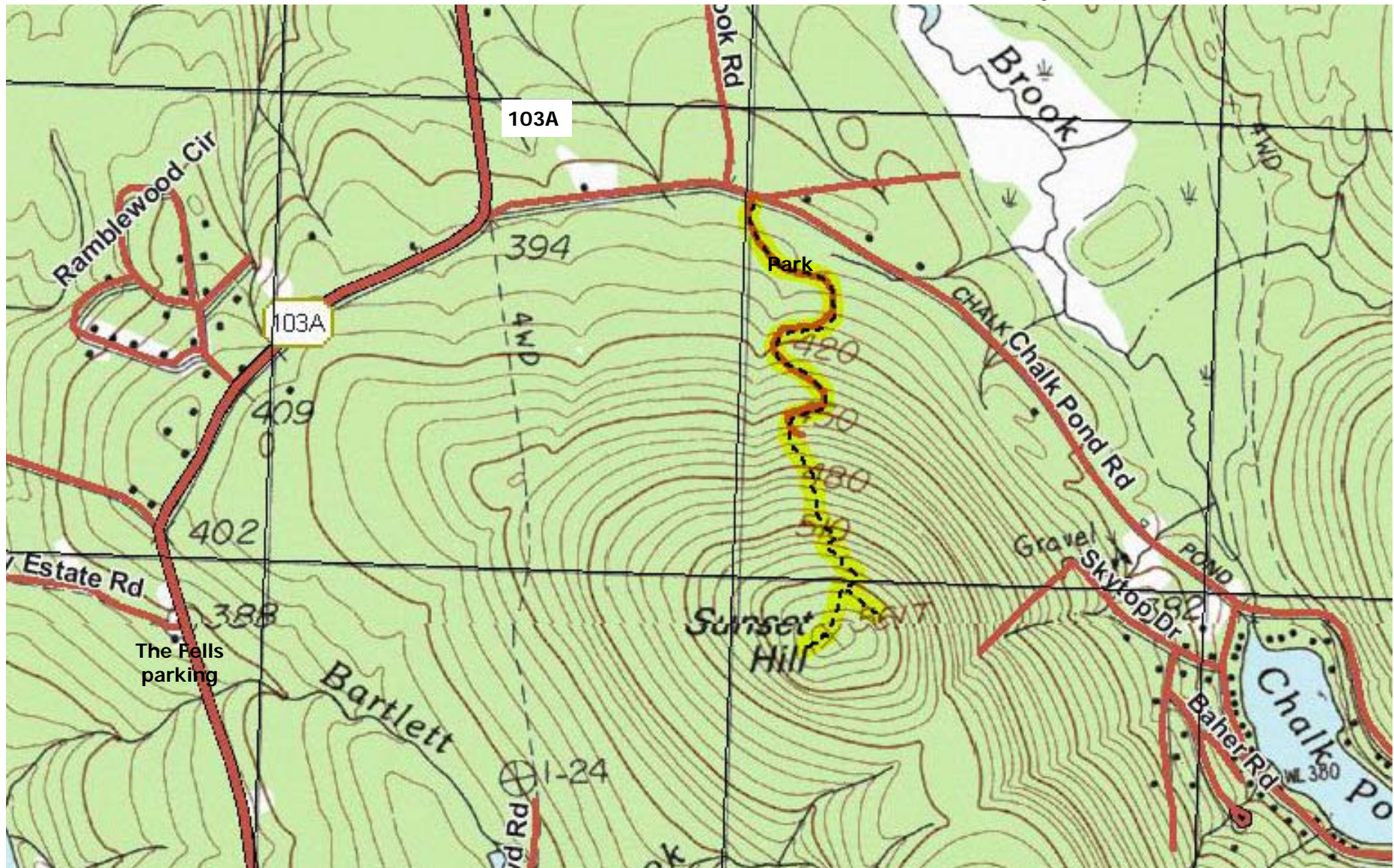


## Kidder Tract #40 (37 acres) Chalk Pond Rd., Newbury, NH



Once slated for an 18-unit condominium, the 37 acre Kidder Tract is notched out from the curve of the northern boundary of the Hay Forest. The ASLPT helped raise \$69,000 to purchase the parcel and make it part of the Hay Forest as well as creating a permanent memorial to New London conservationist Bill Kidder Jr. Its new owner, the Society for the Protection of NH Forests (SPNHF) dedicated the Sunset Hill-Kidder Tract in the summer of 1999. There are two parts to the Sunset Hill Trail, the one shown on this map runs from the top of Sunset Hill to Chalk Pond Rd over the Kidder Tract. There is also a trail from The Fells entry parking area that leads you to the top along the western side of Sunset Hill. The views of Lake Sunapee are beautiful from the open rocky area at the top.

**Trail description:** Yellow paint trail blaze. Moderate in difficulty only because of the 556 foot elevation gain. You follow the remains of the development road for .3 of a mile and then the trail enters hardwoods to the top. There is a short spur to east near the top with a view north. Total distance: .9 mile

**Driving Directions:** Rt. 103A to Chalk Pond Road. Go .4 of mile on Chalk Pond Road and park at the gate with the large Forest Society sign.

