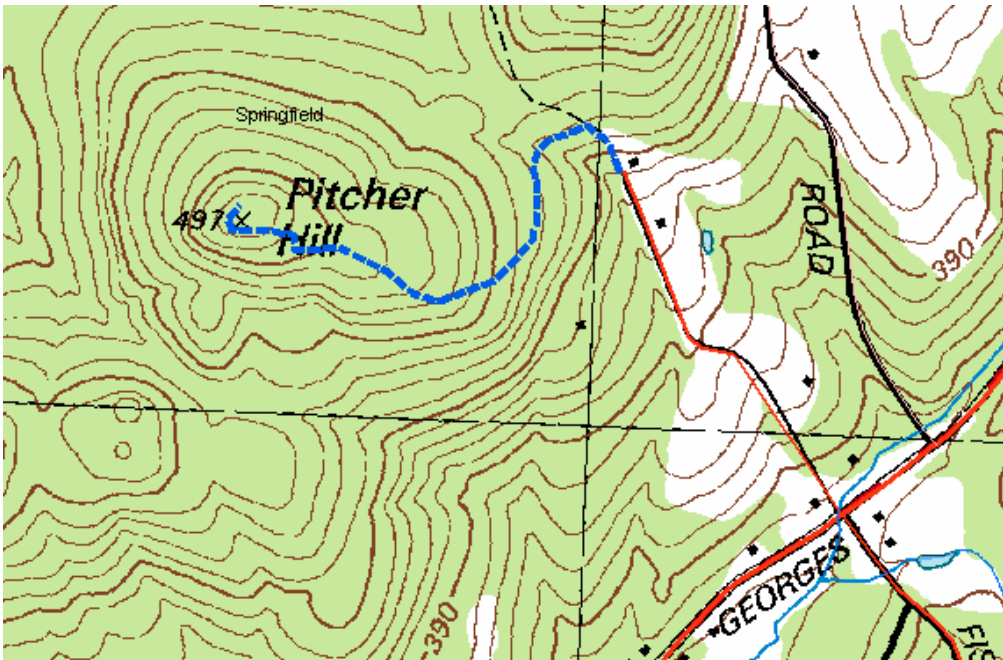


PITCHER HILL TRAIL MAP



— — Trail

This trail is $\frac{1}{4}$ mile to the top of Pitcher Hill. It wanders through a mixed hardwood and softwood forest to exposed ledges with obstructed views to the south, west and north. In the winter it is possible to see Otter Lake, Baptist Pond and the Star Lake Farm pastures.

The Pitcher Hill Trail is open to the public as a result of the conservation easement donated by Dan Thorne and Star Lake Farm to the Ausbon Sargent Land Preservation Trust. Please respect the donor's wishes and stay on the trail. Thank You