

THE AUSBON SARGENT LAND PRESERVATION TRUST

Helping to Preserve the Rural Landscape of the Mt. Kearsarge/Ragged/Lake Sunapee Region
Andover, Bradford, Danbury, Goshen, Grantham, New London, Newbury, Springfield, Sunapee, Sutton, Warner & Wilmot



Chatter



Summer 2023



Seasons of **Change**

From the **EXECUTIVE DIRECTOR:**



The Ausbon Sargent Land Preservation Trust

has flourished during Debbie Stanley's 35-year tenure as Executive Director. It has grown from a modest Board of Trustees with a good idea, to a dynamic

community of committed volunteers, land stewards, and conservation leaders who have embraced that mission and put it into action.

The accomplishments during this time have been remarkable: 165 conservation easement properties, hundreds of volunteers, and over 13,000 acres protected across our 12-town region. As the new Executive Director, I feel an enormous sense of respect for what the land trust has become, a responsibility for Debbie's legacy, and a commitment to our mission.

The land trust's mission is "to preserve the rural character of Mt. Kearsarge/Ragged/Lake Sunapee region through land conservation, stewardship, community engagement, and organizational integrity." All of these activities are on full display at the land trust today.

So what does it mean to preserve "rural character"?

It speaks to more than the specific lands we protect—it also speaks to the effect our work has on the place we call home. When I first brought my (now) wife Julie to visit Elkins in the late '90s, she thought she had walked into a Currier & Ives painting. We were fortunate to visit during one of those perfect New Hampshire winters: the soft light of solitary advent candles illuminating the snow-covered windowsills of sensible, solid Yankee homes as snowflakes silently blanketed the road around us.

Imagining ourselves worldly, we took it upon ourselves to bring my Nana Lull to the latest local restaurant to wine-and-dine her each time we visited. One night at La Meridiana in Wilmot, a weathered, white-haired gentleman ambled up to our table and gallantly shook her hand. Delighting in a younger man's attention, she introduced him to us as a retired executive at the New London Trust. With a mischievous grin he turned to Julie and said:

"Jennie was my teacher."

"Oh really?!"

"Yes, I was in her first-grade class."

Wink.

A lot has changed in our region since then. The New London Trust became Lake Sunapee Bank, and now Bar Harbor Bank and Trust. Houses have grown larger (including my family's). The rocks in Pleasant Lake have gotten just a bit too slick for the kids to jump across. Entire generations have passed on. Yet for more than three decades, Ausbon Sargent has been diligently preserving the rural landscape that gives the Mt. Kearsarge/Ragged/Lake Sunapee region its distinctive names, terrain, and color.

So what is this "rural character" we are charged to preserve? Is it the quiet solemnity of advent candles? The sturdy construction of old Yankee houses? Trails wandering across farms and forests? Is it the absence of stoplights? The millstone on the town square? Or is it the easy camaraderie between an elderly local businessman and the teacher he had in grade school whose lives have been loosely intertwined in the community for the better part of a century?

It is surely all of the above and more.

Rural character is hard to define. But its preservation is the land trust's ultimate objective—the purpose behind the places we protect. Perhaps the easiest way to define rural character is "I know it when I see it." And each generation sees things a little differently. The Mt. Kearsarge/Ragged/Lake Sunapee region has passed through many seasons of change: Abenaki people gathering in villages along the area's lakes and rivers, the colonial era of forest clearing and farming, the rise of early industry; emergence as a center for education, the arts, and outdoor recreation; the flourishing of retirement communities and a culture of volunteerism.

This issue of Chatter explores the changing character of our region through the lens of seasonal cycles, climate, habitats, conservation, and people.

In an age of dizzying upheaval, we look for continuity to anchor the seasons of life against quickening cycles of change. Our work to protect rural lands-in perpetuity-provides the substrate for rural character as each generation maps a new vision onto the landscape, adding layers to the foundation laid by their predecessors.

I'm truly grateful for the welcome I've received from Debbie and the amazing community of Board, staff, and volunteers that have grown up around her leadership. It's an honor to be joining the Ausbon Sargent Land Preservation Trust as we explore the next seasons of change.

Ben Wallace

A handwritten signature in black ink, appearing to read "Ben Wallace". The signature is fluid and cursive, written over a white background.



Seasons of Change

by Kristy Heath

Just as quickly as the cold temperatures of fall turned our lush green leaves into vibrant golds, reds and oranges, ushering in the snow and bitter chill of winter, we now find ourselves in the midst of summer here in NH. The green leaves are back, flowers are in bloom, birds are singing, and people are taking to the trails and the waters to explore, cool off, and recreate. Despite being a native of the Granite State, I am always shocked at how our landscape can look so different even from one week to the next. As we all know, changes can happen quickly, sometimes even faster than the seasons that meld into each other in our region, creating a seamless shift in how things look, feel and sound around us.

Change, albeit scary to most, is necessary for growth. At the Land Trust, we are constantly faced with change, whether it be in our staff, board members and volunteers, in the properties we have protected, and even the climate in which we live. With each change, we can see growth and sometimes feel the growing pains that foreshadow more change ahead. Just recently, we welcomed a new Executive Director to the Land Trust, who will continue leading us towards our mission to protect the rural landscape we love. We have also welcomed an Outreach and Stewardship Assistant for a one-year fellowship, who will help ease the increased workload put upon our staff, which is working to manage over 20 square miles of protected land within our 12-town region. Working together and maintaining a high level of flexibility is key, and it is what has moved Ausbon Sargent Land Preservation Trust forward in its mission with each acre that is protected.

For the past 36 years, the Land Trust has worked, alongside its supporters, to help protect our watersheds, wildlife habitats, farms, forests, open lands and views—all the things that are part of the rural landscape that we call home. For the wildlife that are helpless in the face of changes that force them from their habitats, for the pollinators that emerge in the spring and cannot find sustenance to survive, for vulnerable watersheds that are vital to our ability to have clean drinking water, and for the views of mountains, fields, lakes, ponds and rivers, and so many other rural landscapes, we must act. It is easier to protect these resources now than to try and clean them up later.

Many of us have moved here from places that “used to be” rural in nature, but over time have become built up and not so nice to live in or look at. To maintain our sense of peace and our connection with the natural surroundings we have found here, we need to remember that, like the seasons, change is inevitable – unless we make a conscious effort to stop it. If you are not already a member of Ausbon Sargent, please consider joining. If you love the outdoors or have a skill to share, along with some time to volunteer, why not give us a call? If you have a property that you love and worry that someday it will be developed and no longer hold the attributes of a rural landscape, let us help. There are many ways to be a part of our mission to protect our landscape and avoid the changes in our region that we don’t want to see.

Kristy has worked at Ausbon Sargent for eight years. She writes grants, plans events, and manages the website, social media and “The Chatter” newsletter. In her free time, Kristy enjoys camping, traveling, and spending time with her three daughters and Shih-Tzu, Happy. A native of the region, Kristy is always up for a walk in the woods.



Outreach and Stewardship Fellowship

by Kristy Heath

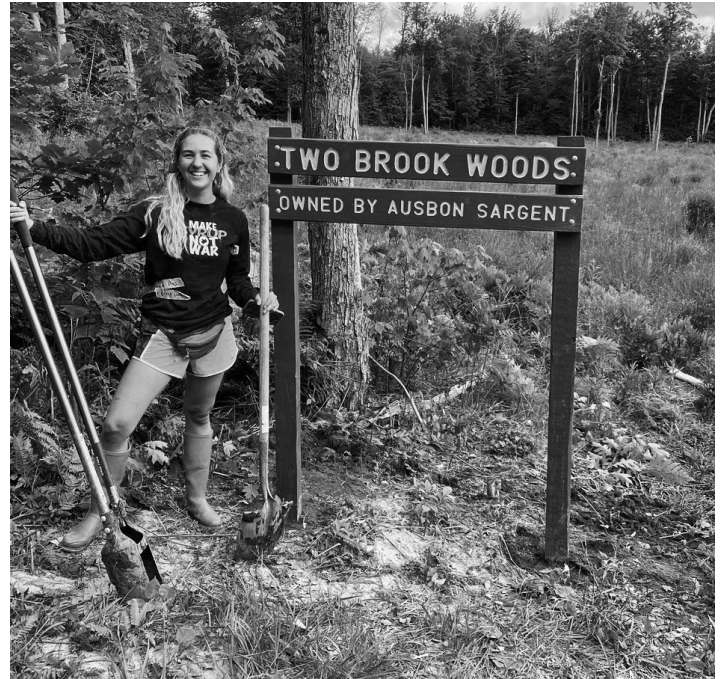
Outreach is one of the most important functions of the Land Trust. Without outreach, there are no people! There are no people who feel drawn to the work we do; no people to become members who will financially support our mission; no people to volunteer to sit on our board and committees, stuff envelopes, help at events and monitor our properties; no people who own land and feel a pull towards protecting it for the generations to come; and no people to frequent and share with others the special places that make our rural landscape so unique. Outreach brings awareness to available land on which to explore. Outreach educates the public on the importance of protecting our vital resources, and how not only the land, but also the watersheds, wildlife habitats, and views are protected by conservation easements.

Ausbon Sargent includes an element of outreach in most of its functions. Stewardship (maintaining properties and trails, yearly monitoring, and keeping open relations with easement property owners) and communications (website, social media, newsletter) work to invite and serve the members of the communities in our region and encourage support and participation to further our mission.

Beginning June 12, 2023, Ausbon Sargent increased its stewardship and outreach efforts through the creation of a Stewardship and Outreach Assistant fellowship. For one year, Glennie LeBaron, recent Brown University graduate and past intern/Stewardship Assistant for the Land Trust, has been hired to work alongside the Ausbon Sargent staff. With 165 properties to oversee, 14 of them owned in-fee by the Land Trust, the demands on Ausbon Sargent are high. Glennie is excited to spend the next year with Ausbon Sargent. With a background in Environmental Science, Conservation Science and Policy, and a strong familiarity with Ausbon Sargent, Glennie will be an asset to the Land Trust and her role will be key in taking our stewardship and outreach efforts to a new level. Already familiar with a great number of our easement properties, property owners and volunteers, Glennie is also a veteran hike leader and growing naturalist. She looks forward to assisting in day-to-day stewardship tasks and creating unique events and opportunities to attract certain demographics, which we feel are currently underserved by the land trust.

“Ausbon Sargent has been integral to my growth and learning over the last few years, and I look forward to stewarding properties as I continue to connect with our broader community.”

Funding for this fellowship came, in part, from a generous anonymous donor, and was supplemented by private grants.



Over the 2022 summer season, Glennie led the installation of property signs on Ausbon Sargent-owned properties.



Bradford Bog Headwaters property.



A trail that runs through the Pound Woodland Preserve is open for public access.

Facts about the
Pound Woodland Preserve

Town: **Wilmot**

Location: **Pound Road and Wilmot Center Road**

Total Acreage: **125 acres**

This property:

- Is a donation of a conservation easement by Ken and Nola Aldrich.
- Contains Cassey Brook, which then flows into Ausbon Sargent's "Cassey Brook Preserve."
- Has been identified as an important area for protection in the Wilmot Master Plan.
- Includes a portion of land that is "highest ranked habitat" in the NH Wildlife Action Plan.
- Is open to the public for low-impact recreational use, and has an existing trail network.
- Is protected with the help of the Wilmot Conservation Commission.



The Bradford Bog Headwaters property.

Facts about the
Bradford Bog Headwaters Property

Town: **Bradford**

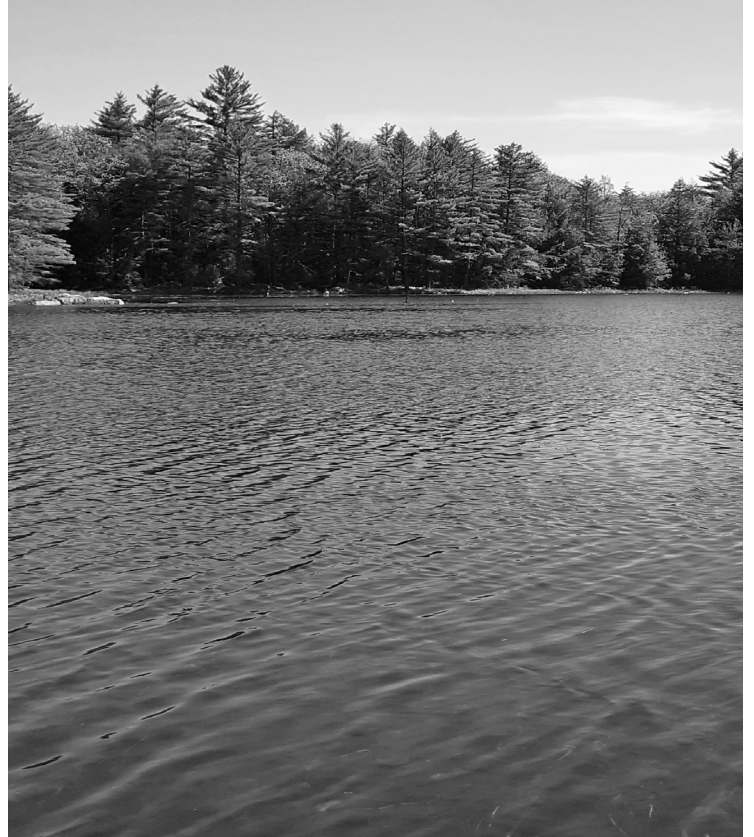
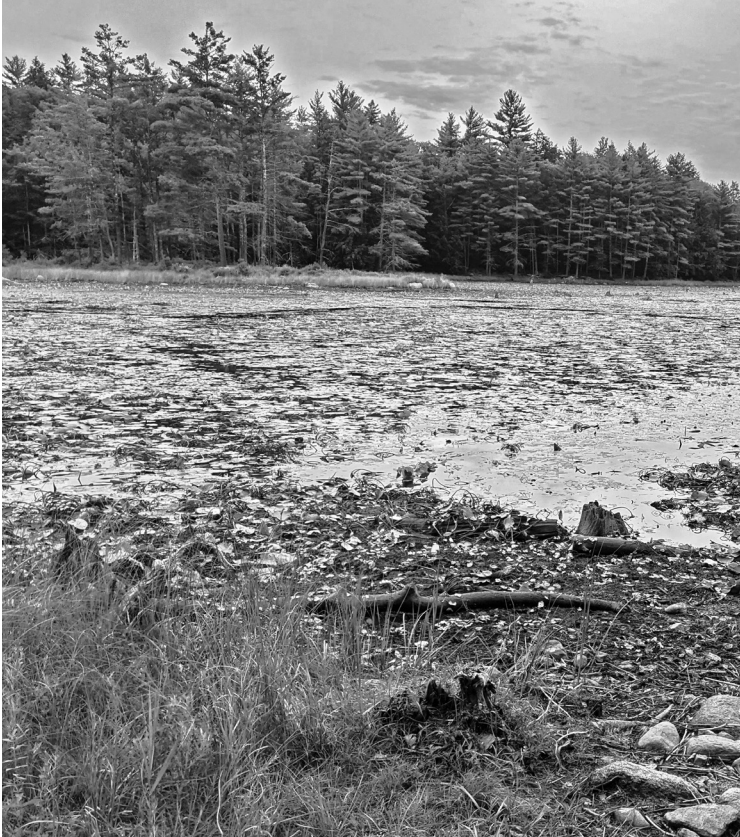
Location: **East Washington Road**

Total Acreage: **71.66 acres**

This property:

- Was purchased by Ausbon Sargent on June 9 with assistance from the Bradford Conservation Commission, the Rural Heritage Connection of Bradford, the NH Land and Community Heritage Investment Program (LCHIP), the Moose Plate Grant Program, Quabbin to Cardigan Partnership, Fields Pond Foundation, Burton Morgan Foundation, and many individual private donations.
- Protects the Bradford Bog headwaters.
- Is an important regenerating forest; a haven for many threatened species of birds.
- Is "highest ranked habitat" in the NH Wildlife Action Plan.
- Is open to the public for low-impact recreational use, including hiking, x-country skiing, hunting and fishing.
- Will be managed by Ausbon Sargent.

Shifting landscape



The beaver pond at the Wayne and Trudy Beaver Saga Pond Forest has gone through many changes over the years, but the resilience of the beavers can be seen with each rebuild of the dam.

by Anne Payeur

The only constant in nature is change. Working in land conservation we must take a long-term view and know landowners conserving their property today may want to manage land differently than their successors.

Conservation easements typically allow for land to be managed for forestry and agriculture, including timber production and raising crops or livestock. While sometimes forestry and agriculture can be accomplished together, many times the land is converted from one to the other and sometimes even back again.

Many of the forests we see today were open pastures not too long ago. This is evident by stone walls created by farmers to delineate their boundaries and clear rocks from their fields. A few of these spaces have been maintained as open since their original clearing, but many grew back to forests.

Beyond human influence, we see natural forces changing the landscape too. Weather events like hurricanes, ice storms, and tornadoes can rip through forests, flattening trees. These areas may be salvaged and converted to fields, or they are left to regenerate to forests once more.

Wildlife can alter the landscape too. Birds eat the seeds of plants they find sweet and disperse those seeds to new places. Deer will eat the buds of hardwood trees like oaks and maples, setting back the growth of many young trees. Beavers will eat and use trees to build dams along narrow brooks to make ponds in forests, creating habitat for fish and feeding grounds for birds like Great Blue Herons.

The family of beavers calling our Wayne and Trudy Beaver Saga Pond Forest home have shown great determination. While they have been maintaining the pond for decades, they are not immune to change. In the past few years their dam has broken on a few occasions. While they were able to rebuild the dam, the pond saw big changes while under construction. Change is inevitable, but as we look around, we see our landscape adapting.

Anne Payeur has been with Ausbon Sargent for three years as the "Stewardship Manager. She oversees the monitoring of conservation easement properties as well as the management of properties owned by Ausbon Sargent. Anne and her husband, Hunter, live in Boscowen with their baby, Zeke.

The Effects of a Changing Climate

by Andy Deegan

The Land Trust Alliance (LTA) has a goal of protecting 30 percent of both terrestrial and marine ecosystems by the year 2030. This goal was set not only to protect water resources, healthy food, clean air, and wildlife, but also to minimize the impacts of a changing climate. The LTA is relying on land trusts, both local and national, to achieve this 30% by 2030, or “30 x 30” goal, and Ausbon Sargent is working to achieve that level of conservation in each of our 12 towns.

Limiting the impacts of a changing climate is important as some of our native plants and animals will not be able to tolerate warming temperatures and will be forced to either move north or perish. Conserving large areas of land allows for the movement of animals without interference from development or roads. A variety of soil and geological resources can also help plants and animals survive in our region. For example, if the northern side of a hill is protected it may allow for cooler temperatures, which may make it easier for a species to survive. By conserving larger areas of land with varying habitats and geological resources, we can provide plants and animals with places to move and thrive through seed distribution or migration.

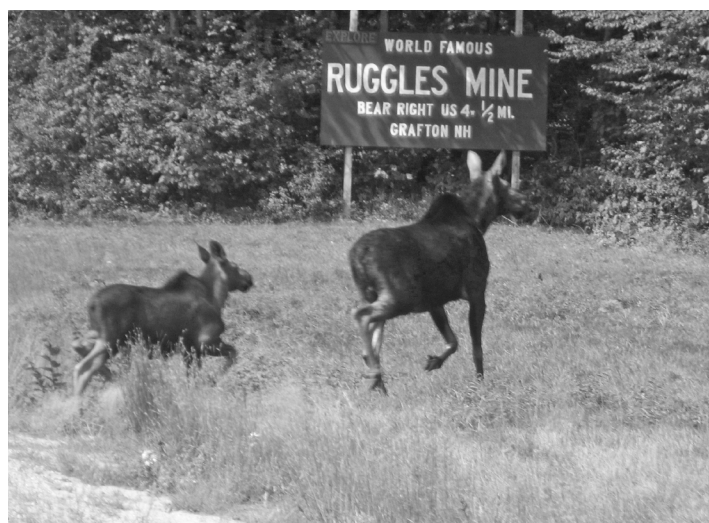
Another impact from a warming New Hampshire is the expansion of invasive species. The hemlock woolly adelgid is a good example. This insect was introduced from Asia and has been expanding its range northward as winters become milder. In the southern portion of the state the impacts of the adelgid can already be seen on hemlock populations. Infested hemlock trees are dotted with cottony egg masses on the underside of their branches. These trees do not have the dark green foliage of a healthy hemlock but are a gray, sickly color since the adelgid insect sucks all the sap out of the tree. Although the adelgid may not directly kill the tree it does make it weaker and more susceptible to other diseases or infestations. The loss of hemlock stands would be detrimental to many wildlife species, but particularly white-tailed deer and native brook trout. In the winter, this evergreen's foliage holds snow in the air making the snowpack on the forest floor shallower. These hemlock “deer yards” help deer because it is easier to find forage and walk in the woods when there is less snow. In the summer, hemlock stands along streams provide shade which keeps the water temperature cooler for native trout. Unfortunately, the warming climate is allowing for the expansion of the adelgid's range, but protecting hemlock stands over a wide area of the state may help the species persist.

Another pest that has a greater impact with milder winters is the winter tick. Winter ticks are primarily found on moose and can severely impact their health, especially of young calves. As the name implies, the winter tick attaches to the moose over the winter when the amount and quality of the forage is at its worst. Like the adelgid and hemlock, the winter tick may not kill an adult moose outright, but a heavy infestation can result in an anemic individual that

is weaker and more likely to die from another cause, such as starvation or predation. Warmer winters with less snow cover allow for an increased chance of the winter ticks' eggs surviving. When the female tick is fully engorged, she will drop from the moose so she can process her blood meal and develop eggs. If the female drops from the moose and lands on snow, there is a poor chance of the eggs developing. If they fall on bare ground, however, many more of the eggs will survive to produce more ticks. With milder winters the ground will become snow-free sooner, which gives the winter tick a greater chance of successful breeding.

Land conservation can help slow the impacts of a changing climate by allowing animals and plants the wild space they need to adapt and move to more hospitable areas. Protecting a variety of habitats and connections between them from development is key to fostering resiliency for the future in the face of climate warming. The goal of conserving 30 percent of our land base by 2030 may seem daunting, but it is a goal Ausbon Sargent will be working towards in our small but important region of New Hampshire.

Andy Deegan has been a Land Protection Specialist with Ausbon Sargent since 2008 and celebrated 15 years with the Land Trust in May. He lives in New London with his wife and two children. In his free time, he enjoys birding, kayaking, hiking, and generally being outside.



Courtesy Jim Sanberg

Moose sighted during the Kearsarge Classic Bike Randonnee in Andover, NH, 2012.



The Ausbon Sargent Land Preservation Trust

Membership & Annual Fund



Ausbon Sargent wants to thank our Membership, Annual Fund and Corporate Matching Gift donors from 7/1/22-6/7/23.

*denotes gifts to both Membership & Annual Fund. +denotes a corporate matching gift. ^denotes deceased.

AUSBON SARGENT SOCIETY

Jane Brock-Wilson
Suzanne & Lyman Chapin
Christina Cuevas
Robert & Sara D'Alelio
Jean Dulude
Steven & Mitzi Elkes
Domenic & Molly Ferrante*
Martha & Robert Hopkins*
Susan & Stephen Immelt
Kate Kellogg & Randy Peeler
Gordon Marshall*
Carol Thrane & Robert Martin*

LEGACY CIRCLE

Lisa & David Andrews*
Duncan Beardsley*
Mark & Kristen Begor
Eve Burton & John Finck*+
David & Barbara Calhoun
David & Barbara Roby*
Bruce & Bonnie Sawyer
Kiki & Daniel Schneider*
Robert & Debbie Zeller*

LEADERSHIP CIRCLE

David & Brenda Beardsley*
Ginny Gwynn & Jon Bellis*
Stan & Pam Bright*
James & Sharon Broadhead
Clara Butler
Robert & Nancy Cleveland*
Jon & Margot Davis
Laurie DiClerico*
Jeff & Roberta Hollinger*
Sally & Michael Keating
Michael & Sharon Kelly
Charlie & Cynthia Kelsey*
Barbara & Michael Kreisler*
Robin MacLroy & William Spears
Virginia Mars
Tom & Bliss McCord
James & Judith M. Oates
Marcelle & Alan Pike
Timothy & Lizette Sliter
Tom Thomas
Mark & Karen Vachon
Peter & Pamela Voss*
Bob & Tona White

BENEFACTOR

Robin Albing & Don Castle
Ken & Nola Aldrich*
Steven & Nancy Allenby*
Larry & Jane Armstrong*
Douglas Bacon & Anne Marie McGarry*
Stephen & Sallie Barker*
Philip & Barbara Barr
Ray Barrette
Kathy & David Bashaw*
Kirk & Julie Bishop*
Shelby & Woody Blunt
Ann Brayfield & Joseph Emerson
Jennifer & Mathew Broas

Doug & Alane Carey
Debbie & Keith Chrisman
Deborah Coffin*
Bill & Sue Conaty
Jean & Jim Connolly*
Thomas & Martha Cottrill
Miner & Helen Crary*
Marjorie Cross
Ron & Susan Crowell
Chris & Janice Cundey
Lynne & Bob Delise*
Bob & Renamarie DiMuccio*
Jen Ellis
Susan & Scott Ellison & Family
Walter & Elaine Ensign*
Karen & Rich Epstein
John Everly
David & Rachel Fine
Michael Fleischer
Laura Beth Foster*
Jack & Lisa Garrahan
Nancy Garrand
Gerry & Jane Gold*
Sally & Al Griggs*
Bonnie & Tom Guterl*
Janet Miller Haines
Deborah Hall*
Ann & Neal Harris*
Frances Harris*
Sally Harris & Pierre Lessard+
John & Thelma Hewitt
Thomas & Marilyn Hill
Elizabeth Janeway
Dan & Betsy Junius*
Joan Kinne
Pete & Heidi Lauridsen
Jud & Cindy Lawson
Emily Leff & James Davis*
Nina Lian & Harlow Farmer+
J & J Lowe Family
Betsy & Jim Lyons*
David & Nancy Macdonald*
Kathy & James Mathias
Myra Mayman & Alex Bernhard*
Dennis McCafferty
Donald & Gabby McCree
Karen McGrew*
John & Robyn Muller*
Robert & Judy Odell*
Dave & Bev Payne
Mark Pederson & Keith Facceno
Pamela Perkins*
Phyllis Tilson Piotrow*
Janet Prew*
Jackie & Carter Roberts
Steve Root & Karen Ebel*
Caroline & David Ryan
Jim & Barbara Sadowsky*
Heidi & Jason Saghir*
Laura & Michael Salvay
Daniel & Jayna Schimberg
Susan Schlough & Andrew Abbott*
Clare & Rich Segall
Deirdre Sheerr Gross

Fred & Sue Sievert*
Daniel & Eleanor Snyder*
Nancy & John Solodar*
David & Stephanie Spina*
Deborah & Peter Stanley*
Geo & Janie Stephenson
William & Betty Stockwell
Gary Surprenant
John Q & Renate Tilson*
Bernard Towne*
John Trachy & Cynthia Hayes*
Artemis Tsagaris & John Bruno*
Gene & Susan Venable*
John & Debbie Wilson
Chris & Cindy Winship*
Anthony & Bertie Woeltz
Dan & Bev Wolf
Paul & Margaret Wutz

PATRON

Jeanine Berger
Nancy & John Berger*
Neil & Elizabeth Bergquist
Charlie Betz
Chuck & Emilie Bolduc
William & Sarah Boynton*+
David & Nancy Brazier*
Steven & Michelle Briggs*
James & Susan Campbell
Woody & Cynthia Canaday
Karen Cangiano
Cindy & Timothy Carlson
John Cavender & Rosalind Stevens
Karyn Cepek & Jeff Evenson
Dick & Sage Chase*
Alison Coady*
Kirk & Bette Cruikshank
Cheryl Cummer
Kim De Morgan
Mary Doyle
Larry Dufault*
Sue Eaton
Midge & Tim Eliassen
Donald & Susan Elliott*
Mary Eysenbach
Peter & Catherine Fiore*
Fred & Graceann Foulkes
Ivor & Barbara Freeman
Lexi & Juan Garcia*
John Garvey & Cotton Cleveland
Lynn & John Gilbert
Walter Goddard
William Goldthwait & Courtney Church
Joan & Allan Gould*
John & Jane Griggs
Kara & Jamie Gruver
Gerald Hersey*
Fred & Tammy Hill*
William & Linda Hoffman*
Peggy Hollinger*
Jane & William Hopwood
John & Teresa Horan*
Beth & Tom Horner*

Andre & Kelly Hunter
John Hutchinson
Daniel Innis & Spencer Wyand
Ken & Kristen Jautz
Andy & Dorothy Jeffrey
Nan Kaplan*
Margaret Keane-Hajdarovic & Dzevdet Hajdarovic*
Ron & Vicki Koron
Tory & Sandra Lambert
Sylvia & Robert Larsen*
Nell Leach*
Susan & David Leathers
Blake LeBaron & Una-May O'Reilly*
Michael & Nancy Loucks
Fleuri & Mike MacIntyre
David & Cynthia Marshall*
Carolyn & Robert Mattoon*
Katharine McCrillis*
Connie & Andrew McElwee*
Jon & Sherrie McKenna
Jeff & Dale Milne*
Anne Montgomery
Patrick & Kathleen Mulhern*
Robert & Carol Murphy*
Stephen & Anne Nilsen*
William & Penny Obenshain
James Owers & Leslie Ludtke*
Mark & Deb Pascualano
David & Jill Paul
Stuart & Gini Peltz
Donald & Sherry Rice
Eric & Maria Rieders*
John & Martha Robb
Diane & Bill Robbins
Jessica Roberts*
Jon & Nancy Roemer*
Paul & Janice Sahler
Emory & Susie Sanders*
Joyce Saturley
Jerrianne Seger & William McLaughlin
Cathy Shea & Brad Weiss
John & Sharon Sheehan
Kay Smith
Nathaniel Stevens
Greg & Patsy Steverson*
Patricia Stewart*
Bob & Judy Sturgis
Christopher & Nancy Tatum
Harry & Suzanne Tether
Stephen & Peggy Theroux*
Barbara & Jeff Troxell*
Anne Waehner
Bill & Margaret Weiler*
Pamela & Gregory Weiss*
Clive Wood

STEWARD

Mary Ellen Alger
William & Susan Allen
Sue & Dave Andrews
Walter & Eleanor Angoff
Jitin Asnaani
George & Christine Bachrach

Bethany & David Balford
Ruth & Bill Barney*
Karen Baumgartner & Bill Roebuck
Ann & Pierre Bedard*
Deb Benjamin
Doug Bent & Becky Rockwell
Greg & Astrid Berger
Gordon & Teresa Bingham*
Marla Binzel
James & Helen Black*
Edward Blanchard & Nancy Putnam*
David & Mary Blohm
Sheldon & Betsy Boege
James & Mary Ann Bradley
Cynthia & Greg Bruss
Marcie & Lindy Campbell
Douglas Carroll & Deirdre Smith
Michael & Susan Chiarella
John Clough*
Ki & William Clough
David & Sheila Corban
Bob Crook
Jane Cumming
Bonnie & John Dale*
Charles & Elizabeth d'Amour
Julie & Jeff Deacon
Sally Dean*
Michael & Betsy Deasy
Gwendolyn des Cognets
Lorraine & Stephen DeShiro*
David & Lisa DeSimone
Brenda Digilio & Doug Sweet
Neil & Ellen Sandler Donnenfeld
Joan Doran
Dr. Joseph & Kimberly Eisenlauer*
Stephen Ensign
Jeffrey & Annette Epreman*
Kathryn Farrell & Bradley Grimshaw*+
Barbara Faughnan*
Patrick & Susan Fine
Harriet & Richard Fingeroth*
Katharine Fischer
Tim Fleury & Patricia Halpin*
Charlie & Becky Forbes
John & Maggie Ford*
Carol & Charles Foss*
Roger & Karen Foulkes
Rebecca & Michael Friedman*
Roger Friend
Steve & Michelle Goldsmith
Pat & Gene Hall*
Thomas & Linda Hamlin
Martha & Dave Harris*
Richard & Janet Hendl
Keith Herndon
Arthur & Louise Hildreth*
Perry Hodges & Herb Marks
Deborah & John Hoover
Jeff & Lyn Hopkins*
Kimberley Hornung*

Jan Hostage & Elizabeth Stevens
Carol Howard*
Stephen & Mary Lou Hoyt
Leverett & Catee Hubbard
Peter & Kerry Ingold*
Bruce & Marsha Johnson*
Nola Jordan
Stephen & Marianne Jordan
Thomas Kenneth & Linda Joy
John & Theresa Joyce
Richard & Karla Karash
David & Martha Karrick*
Elizabeth Kent
Susan & Glen Kerkerian
Caroline Kittredge
Kathleen & Fred Knapp
Deborah Lang & Peter Savickas*
Peg & Dick Lawton
Frank & Joyce Lemay*
Mark Lennon
Joshua Lipton & Wendy Clough
Carolyn Lockhart
Alicia Lopez & Victor Del Vecchio
Matt & Kate Worrie
John & Susan Manaras
Polly & Tom Martinson
Michael & Rosemary McElroy
Jim & Pam McGraw*
Tom & Chris McKee*
Patrick McMonagle*
Dana McSherry & Kent Greenfield
Mark Mordecai*
Michael Morgan & Laurie Schive
Tina & Duncan Morhardt
Linda Morrow*
Lela Moses*
Lynn & Gary Mountford
Steven Muller*
Bob & Sondra Newman
Peter & Susan Nichols*
Robert & Rita Norander
Matthew & Alison Nowak
Sarah & John O'Connor
Jeff & Lindsay Paul*
Jennifer & Jonathan Paul
Alice Perry*
Timothy Pratt
Michael & Frances Quinn
Joyce & Paul Rheingold*
Bruce & Maura Ritz
Donald & Elaine Robar*
Lee & Nina Rogers*
Harry & Sue Rohrer
Nancy Rollins*
James Rooney
Rachel Rosenblum
Vahan & Anne Sarkisian*
Lee & Martha Schimberg
Jonathan & Janet Schwartz
Tod Schweizer
Richard Schwemm
Arthur & Mary Ellen Scutro
Peter Segal
Jane Shanahan
Jack & Pat Sheehan
Judith Sheon*
Mike Sherrill & Carol Meise
Bob Silvia*
Paul & Carrie Sohigian
Lorraine & Stephen Sonnabend*
Peter & Lisa Souza
Jean Spaulding & Bob Kjellman
John Stevens*

Beth & Gary Stich*
Linford & Mary Ellin Stiles
Mike & Nan Stolpinski
Ralph & Christina Sweetland
Mike & Kathy Thomas
Jeff Trombly & Judy Fox
Jane & Jack Unkles*
Robert & Geary Vail*
Anne Vantine & Robert Evans
Ralph & Kathy Verni
Richard & Karene Wallis
Anne Walsh & Steven Buller
Edmund & Jane Walsh
Betsy Denny Warner
Anne & Gil Watkins
Sheryl & Gerard Weber*
Eric Werme
Bob & Tanya Wilkie
Sally Wilkins
David & Carole Wood
John Worrall & Cynthia Bakon
Ellen & Harold Yanofsky
Susan Youngs
Thomas & Amy Zacaroli
Alicia & Matt Zanderigo
Robert Zock

PROTECTOR

John Adams
Stephen & Cynthia Bailey
Jennifer & Charles Baker
John & Sheila Barnett*
Lynne & Christopher Bartlett
Barbara Beal*
Kathleen Belko*
Seth Benowitz
Muriel Bergeron
Jane & Jack Bierwirth
Peter Bloch & Kathy Lowe Bloch*
Robert & Kathy Bowers
Barry & Susan Bradford
Gary & Linda Brenner
Edgar & Nancy Broadhead
David & Diane Brown
Judy & Bob Bruguieres*
Susan Buchanan
Paul & Patricia Buddenhagen
Carolyn Byrne*
Elizabeth Cacciola & Neil DuBois
Kathy & Joe Carroll
Anthony & Navidad Carter
Paul & Patsy Catsos
Elibet & George Chase III
Ambrose Linyau Cheung
Mike & Katie Christopher
Tom & Judy Clay
Robert Cole
Charles & Ruth Anne Collins
Bradford & Kathleen Cook
Celeste & David Cook
William Corrigan
Glenda Cottrill
Paul Curcuruto
Karen & Paul Dale
Barbara & Leonard Darling*
Wynne DeMille*
Jim & Betsy Dexter
Francesca DiMaio
Paul & Pamela Donlin*
Ann & John Donnery
Linda Donovan
George Duncan
Sherry Edmonds

Howard & Diane Ehrlich
Carol Emanuelson & Rodney Buttry
Jeff & Brenda Estella
Jennifer Esten & Jonathan Waage
Paul & Sue Etkind*
June & Peter Fichter
Peter & Alice Field
Elizabeth Fielding & Ken Kessler
John & Carol Filbin*
Judith Formanek
Elizabeth Forsham
Jennifer Frost
Glenn Fuller & Barbara Carroll
Joyce Gawron & Susan Ware
Mark Geer & Anki Wolf
Nancy & John Girald
Timothy Glover
Gail Goddard*
Peter & Catherine Goldsmith
Patricia D. Goodlin
Renee Gustafson & Richard Hocker
Charles & Marion Hafner*
Peter & Carolyn Hager
Michele & David Halsted
Elizabeth Harper
Amy Jo Heffernan & Joe Goodnough
William & Tina Helm
May & Bob Henry
Debbie & Dan Hildebrand
Edwin & Becky Hiller
Jane Hollinger
Kate & Sean Hood
William & Lynne Hoyt*
Bob & Peggy Hutter
James & Michele Jaworski
Beatrice Jillette
Frans Kaashoek & Mathilda Van Es
Nancy & Peter Keenan*
Kristen & Christopher Kelley
Rick Kidder
Margaret Kincaid
Susan King
Jack Kirk*
Nancy Klotz & John Bowen
John & Diane Kreager
Kevin Leavitt
Kenneth Limburg
Elizabeth Little
Lenore & Elliott Lobel
Sandra & Rob MacGregor
John MacKenzie*
Scott & Lisa MacLean
Philip MacNeill
Frank McBride
Sarah McClennen
Carol & James Michael McGarry
Jeannette & Donald McInnes
John & Susan McKenzie
Kenneth & Linda Miller*
Gert Moberg
Robert Moser
Leslie & Steve Mulcahy*
Blake & Pat Munson
Ilse Nigro*
Tim & Suzy Norris
Dan & Jacqueline Nowicki
Philip O'Brien
Michele & Frank Occhiuti
Fredrick & Susan Orkin*
Marilyn & David Paradis*
Bruce & Sara Parrott
Thomas & Janet Paul

John Philbrick & Mary Ropka*
Glenn & Susan Pogust
Timmie Poh*
Jeffrey & Cheryl Powell
Tricia & Elliot Pratt
Alan & Kristen Retter
David & Beth Ries
John & Sue Rogers
Jesse Roisin
Roland & Denise Rondeau*
Richard & Suzanne Rothstein
Nancy & Jim Rudder
Richard & Mary Lou Sawyer
Connie & Brackett Scheffy
Jill & John Schiffman*
John & Sage Scott
Edward & Sarah Scrivani
Brenda Shapiro & Jerry Karr
John & Mary Ellen Sheehy*
Richard Sherman
Aaron Simpson
Cindy & Aaron Snay
Harold & Jessie Sofield
Mary Lou Spofford
Stanley Farm Association
Steven Strussenberg & Linda Welch
Margaret Tarzia
John & Tricia Tilley*
Thomas Tilson
Sandra & Daniel Trainor*
Steve & Pam Trostorff
Paul & Jane Vance
Stacey & Michael Vinick
Pat Waldeck
Neil Wallace
Scott & Joan Warren*
Donald & Paula Watson
John & Margaret Weale
Gene & Cathy Weber*
Janie Webster
Donna Weiss
Elizabeth & Baur Whittlesey
Brian & Mary Wicenski
Dylan & Stephanie Wilks
Mark & Rowena Wilks*
Jim Williams & Catherine Bushueff
Lisa & Rick Williams
Bonnie Wilson
Phyllis & George Wolford
Tyler & Kimberly Woolson
Marcia Wright
Stephen & Christine Wright
Karen Zurheide

ADVOCATE

Robin Abendroth
Jon & Peggy Aldrich
Joseph & Carrola Alger
Paul Ambrose
Zachary Ambrose & Deb Bender
Bill & Peggy Ames
Elythe Anderson
Pat & Betsy Anderson
Tom & Kim Armen
Joan & Rick Aseltine
Emily & James Atkinson
Mindy Atwood
John Augustine
Mary & Borden Ayers
Gail & Hal Baade
Laurie & Pat Balch
Elizabeth & Christopher Baldwin
Jerry & Jane Barnes

Mary Barnes
Lew Barr
Jon & Marilyn Barselle
Lori & Rich Bartoes*
Dana Bascom
Bruce Bauer & Paul Sanchirico
Janet Bavicchi
Doug & Charlene Baxter
Anne & Tyler Beck
Robin & William Benincase*
Clare Bensley
James Benson
K. Reed Berkey
Nancy Bernardy*
Ronald Bersaglieri
Roland Berube
Paul Bidwell
David & Beverly Bjorklund
Milton & Sandra Blackington
Tad Blackington*
Jann & Jim Block
Kathleen Bollard & David Click
Beth Boucher
Nancy Brackett
Jyl & Volker Bradley*
Michael & June Bramley
Thomas & Judith Brewer
John Brigham
Holly Brough & Sean MacFaden*
Kenneth & Diane Brown
Michael & Valerie Brown
Robert & Sandra Brown
Amy Bucklin
Kenneth Burchard
Don Burley & Bridget Rowan
Peter Buros
Doug & Anne Cahill
Laura Carle
Tom & Margaret Carley
David Casey
Rob & Bobbi Cavicchio
Jenny & David Chambers
Russell & Jane Clark
Marc & Patricia Clement
Hilary Cleveland
Debra Clough*
Richard Cogswell*
Dianne Collins
Ruth Collins
Anthony Consentino
Tina & John Cotton
Rebecca Courser & Richard Cook
Alicia & Jim Craven
Nancy Crickman
Pauline & Ryan Crocker
Carolyn Crowell
Anne Cushman
Hope Damon & George Chait
Trudy Daniels
Charles & Sharon Darling*
Steven & Gisela Darling*
Theodore & Margaret Dascoli
Elaine & Charley Davidson
Rick & Sue Davies
Pat Dazet*
Colleen DeAngelis*
Jennifer Deasy & Michael Carney*
Andrea DeAugustinis & John Lane
Mason & Lisa Delafield
Richard & Sue DeLuca
Sarah Denz
Joseph Dessert
James & Gale DeVere*

ADVOCATE, CONT.

Doug & Leanna Dickstein
 Carolyn & John Dietel
 Joseph & Beverly Digilio
 Richard Digilio
 Margaret & William Doody
 Carolyn Dugan & Robert Leonard
 David & Merlene Dunlop
 James Durso
 Dick & Nancy Dutton
 Brian & Bernadette Eaton
 Joan Ebbeson & Ralph Perkins
 Mark & Margaret Eckman
 Elias Elachi
 Ann Eldridge
 Heather Eliassen
 Don & Betty Ellwood
 Antonia Encizo & Dennis Varley
 Steve & Amy Eppler-Epstein
 David & Janice Eustis
 Alexander & Helen Eventov
 Mary Fanelli
 Cathy & Ollie Fayton*
 Margaret Fearnley
 Jessica Ferren & Carl Richter
 Thomas & Dona Foerster*
 Betsy & Brian Fowler
 Betsy & Evan Fujinaga
 Patricia Furness
 Lydia & Steven Garrant
 Michael & Anita Gelcius
 Guillaume Georges
 Susan & Carmelo Giacotto
 Helen Gillespie
 Troy & Patricia Glick
 Susan & Al Golden
 Ann Goodwin & Patrick Callahan
 Edward & Sharon Goolbis
 Eric & Marcia Gordon*
 Vinicius Gorgati
 Luke & Christine Gorman
 Wyatt Gotbetter
 David Govatski
 Kit Gracey & Tim Stevens
 Brian Graves
 Melissa Green
 Winslow Green
 Anne & William Griffin
 Peter & Robin Gunn
 Justin Gurksnis & Frances Leitgeb
 Barbara Gurnsey
 Gregory & Mary Gutgsell
 Kent Hackmann
 Frank Hammond
 Mark & Hilary Hammond
 Jane & Stephen Handley
 Dave Hanlon
 Rebecca Harned & Jesse Socci
 Sonny Harris
 Jan & Jim Harrison
 John Haynes &
 Krista Potthast-Haynes
 George & Carla Heaton
 June Hemberger
 Susan & Randy Hencke
 Bonnie Hill & Donna Catanzaro
 Donald & Mary-Lou Hinman
 Lee Hitchcock
 Merle Hochman
 Sheila Hofmann
 Howard & Aryn Hoke
 Paul & Lara Hollinger
 Barbara Hopkins

Bill & Betsy Horn
 Cindy House & Eric Derleth
 Janet Howe
 Henry & Libby Howell*+
 Anne & Bob Hrabchak
 Glenn & Robbie Hudson
 Derek & Debbie Hunt
 Bruce & Abby Hutchinson
 Catharine Hyson
 Denis Ibey
 Lisa Jelleme & Ricker Miller
 Jolyon & Susan Johnson
 Marilyn & Robert Johnson
 Tamera Jones
 Robert Kangas &
 Cora Collins-Kangas
 Andrew & Elizabeth Kargacos
 Matthew Katz & Barbara Fitzgerald*
 Elizabeth & Peter Keene &
 Family*
 James & Dorothy Keeney
 Marcia & Dick Keller
 True Kelley
 Ginny Kellner*
 Mark & Elise Kendall
 Michael & Robin Kennedy
 Laura Kiefer & Gary Stanhope
 Christopher Killam
 Donald & Kaisa Killam
 Jane Kirk
 Nancy & Ron Kitchell
 Betsy & Rick Kloepffel
 Susan M. Knight & Diane Lander
 Margi Knott Lord & Daniel Reidy
 Ken Kohnle
 Allen Koop
 Deborah Kuklis
 Yvonne Kun
 Glenn Lamb & Susan Knight
 Laurie Lamb
 Anne Langsdorf
 Catherine Lark & Mark Koch
 Mary Leadbeater
 Nelson Leese
 Daniel & Leslie LeVan
 Susan Lewis & Steve Gunnerson
 Paul & Ann Linehan*
 Michael & Renee Linville
 Shan Li Liu
 Lois Logan
 Mary Lou & Charles McCrave
 Susie Lowe-Stockwell &
 Rick Stockwell*
 Dorothy Lull
 Susan & Mort Lynn*
 Catharine Mabie & David Johnson
 Peter & Julie Machen
 John & Tracey MacKenna
 Meghan MacLean & Dan Hafner
 William & Phyllis Magner
 Jeff Maguire
 Derek & Eva Mansell
 Rick & Nancy Marsh*
 David & Carla Marshall
 Scott Martin
 David Matthews &
 Ruth Andrews*
 Gail Matthews
 Julie Matz & Deborah Rees
 Julie McBratney
 Maryellen McCabe*
 Marie & Scott McCaskill

Carol McEntee & William Badgley
 Stephen McGrath
 Beth McGuinn & Ruth Smith
 Alan McLean
 Deborah McMillan
 Marcia McWethy & Jeff Singer
 Robert Meader
 Elizabeth Meller
 Mary Michelson
 Mary & Paul Michetti
 Ronald Milauskas*
 Ken & Casey Milender
 Jon & Vicky Mishcon
 Al & Joan Morena*
 Anne Morris & David Steed
 John & Louise Moses*
 Arthur Napier & Barbara-Jan Wilson
 Wes & Nancy Nichols*
 Roxanne Niles
 Christopher & Kathleen Norris
 Lloyd Oakes
 Kara Obey
 Ed Olney
 Mark & Catherine Owen
 Tom & Jane Paige
 Mark Pandiscio
 Anne & Hunter Payeur
 Debra Perkins*
 Alan Peterson
 Robert & Norah Peterson
 Mary-Alice Petrucelli-Timek*
 Ann Philbin
 George Plesko & Martha MacMillin
 Andrew Jeanne Powell
 Richard & Jean Price*
 Robert & Maureen Prohl
 Carol & Tom Pynchon
 Daniel Rahilly
 Kirk Ramsey
 The Randol Family
 James & Deborah Ransom
 Joanne & Walter Read
 Dana & James Redfearn
 Gary Reed & Bonita Betters-Reed
 Ruth & Lansing Reed
 Sue Reel
 Diane & Mike Reidy
 Kathy & Stanley Reiser
 Faith & Thomas Reney
 Mitchell & Janeen Resnick
 Karen & John Reynolds
 Carol & John Richters
 Margaret Riddle*
 Evan & Sarah Roberts
 Michael & Lisa Rubenberg
 Tom Rubin & Jody Cooper-Rubin*
 Peter & Deborah Rucci
 Becky Rylander
 Heather & Matthew Salter
 Joanne & Tom Schamberg
 Virginia Schendler
 Nick Scheu
 Gus Seamans
 Roger & Susan Shamel
 Joe Shaw & Jane Frawley
 Robert Shearer
 Susan & Richard Showalter
 Carole & Kenneth Shutzer
 Cynthia Siegler
 Janet Sillars & Brooks McCandlish
 Matthew & Melinda Siranian*
 Joan & Thomas Sonneborn
 Sophie Sparrow & Chris Eldredge

Denise & Bob Stanley
 Sharon Stearns
 David & Julie Sternberg
 Nancy & Bruce Stetson
 Barbara Stewart*
 Opal Stockwell
 Karen Sullivan
 Bill Sullivan
 Andrew Supplee
 Don & Karin Taylor
 Nancy Teach
 Tammi & Steve Tefft
 Frances & Gordon Terwilliger
 Judy Thackaberry & Dave Munn
 Judith Tierney & Donald Blanchard
 Elizabeth Tine
 Ralph & Arden Tingley
 Brenda Tirrell
 Heidi Tobin & Edward Ordman
 Nancy Todd
 John Tucker
 Dave & Cindy Twombly
 Joel & Lori Underwood
 John & Rosa Vernalia
 Bob von Ette
 David & Susan Wadleigh
 Katrina Wagner
 Ingrid & Malcolm Wain
 Kathy & Nathan Walker
 Ben & Julie Wallace
 Janis Wallace*
 John & Jane Walsh
 John & Elaine Warren*
 Renny & Susan Warren
 Elsa Waxman*
 Ed Weaver
 Van & Robin Webb
 Allie Webster
 Beatrice Weinberger & Josh Klein
 Cheryl & Noel Weinstein
 Susan Weiss
 Kenneth & Lee Wells & Family*
 Roger & Sandy Wells
 Mimi Wiggin
 Barbara Williams
 Hilary Williams
 Tom & Molly Williams
 Helaine & John Winer
 Sally Winship
 Persis Wirkkala
 Bettina & Jim Wise
 Lynn Wittman & Michele Coleman
 Sara & Duncan Wood
 Susan & Matt Woodard
 Anita Woods
 Jane Yonchak
 Donna & Robert Young
 Oglesby & Pamela Young
 Claudia Zent
 Arthur Zerbel*

This list has been provided with care. If you notice any errors or oversights, please contact: ideasy@ausbonsargent.org

SINCERE THANKS TO OUR BUSINESS PARTNERS**LEADERSHIP CIRCLE**

Bar Harbor Bank & Trust
 Rural Heritage Connection
 of Bradford

BENEFACTOR

Better Homes and Gardens
 Milestone Real Estate
 Blue Loon Bakery, LLC*
 Bob Skinner's Ski & Sport*
 Center for the Arts
 Church of the Good Shepherd
 Foundation
 Hager Investment Management
 Service, LLC

PATRON

Durgin and Crowell Lumber Co.*
 Four Seasons Sotheby's
 International Realty*
 McGray and Nichols Inc.
 Meadowsend Timberlands Ltd
 Old Hampshire Designs, Inc.*
 Spring Ledge Farm

STEWARD

Beechwood Property Mgmt., LLC*
 Carey Builders, Inc.
 Chadwick Funeral Service, LLC
 Colby Hill Association
 Coldwell Banker, Lifestyles*
 ERC Associates, PLLC
 Gallup Trucking and Excavation*
 Jake's Market & Deli
 Maloney Associates Insurance
 Musterfield Farm Museum
 NH Conservation Real Estate
 Otter Pond Protective Association
 Pleasant Lake Protective
 Association
 Sheldon Pennoyer Architects
 Sunapee Harbor Riverway, Inc.*
 Walker Automotive Services*
 Woods Without Gile, LLC*

PROTECTOR

Bob's Beacon Marina
 Clayton A. Miller, Inc
 Georges Mills Boat Club*
 Lake Massasecum Improvement
 Association, Inc
 O'Halloran Group, LLC
 Talbot Builders, LLC
 Weaver Bros. Construction Co.

ADVOCATE

Allioops! Flowers & Gifts
 Charlie Mac's Pizzeria of Warner
 Ecosystem Management Consultants
 Friends of Mount Sunapee, Inc.
 Greenleaf Irrigation
 Kayak Country Paddlesports, Inc
 Sunapee Senior Thrift Shop
 Woodcrest Village, LLC

LOCAL CONSERVATION COMMISSIONS

Bradford
 Grantham
 New London
 Sunapee
 Wilmot



The Ausbon Sargent Land Preservation Trust

Thanks



these individuals, businesses and foundations for their gifts of time and funding.

We have much to be thankful for since the Winter 2023 Issue!

Thank you for these special gifts of funding since the winter Chatter.

BEQUESTS

Joseph DiClerico
Doug Lyon
Ruth White

BRADFORD BOG HEADWATERS

Bradford Conservation Commission
Ann Eldridge
David & Nancy Macdonald
NH Conservation Real Estate
Debbie & Peter Stanley
Maria & Bruce Storm

CORPORATE MATCHING GIFTS

Bank of America
Cleveland H. Dodge Foundation
Hearst Corporation
Morgan Stanley
Shell Oil Company

ENFORCEMENT FUND

Ken & Nola Aldrich
Allen Howe & Sandra Sonnichsen

GRANTS

Amazon Smile
State of NH LCHIP

STEWARDSHIP FUND

Ken & Nola Aldrich
Allen Howe & Sandra Sonnichsen
Cynthia Jones
Michael Schneider

IN HONOR OF

Michael Andrews, from NH Conservation Real Estate
Debbie Stanley, from Deb & John Hoover
Opal Stockwell, from Maria & Eric Rieders

IN KIND DONATIONS

Carnevale Design
Echo Communications, Inc.
Michael Deasy
Lake Sunapee Protective Association
Lee Morrill, On Track Design
PCCHelp
Ransmeier & Spellman
SRK Greenway Coalition
WFK Ice House Foundation, Inc.

IN MEMORY OF CHARLIE BELDEN

Benjamin Franklin Elementary School
Harriet Douglas
Rena & Ken Kirshenbaum
Elizabeth Merrow
Sandy Niles

Maria & Bruce Storm

IN MEMORY OF WILLIAM BERGER

Patrick & Judy Zilvitis

IN MEMORY OF JOHN DABULIEWICZ

Julia Ackert
Beaver Meadow School
Catherine Benoit
Nancy Benoit-Melanson, Phil Melanson & Family
Susan & Paul Bernard
Carol Brooks
Kenneth Cogswell
Deb Cantrell
Liberte Dragon
Gretchen Hamel
Tina Hansen
Brendan & Rachel Harrington
Sandra Hess
Gail & Steve Holmes
Marianne Howlett
Bryan Kienke
Maryellen Leach
Mary Macklin
Lynda Magoon
Patricia Mitchell
Sara McNeil
Sara & Ken Robuccio
Deborah Pruell & Amy Gallagher

IN MEMORY OF GEORGE GREEN

Julie Chee
Reginald Morse

IN MEMORY OF BETTY RABY

Stephen Barbera
Patricia Biron & Sherman Lahaie
Ben Grasso
Paul & Ramona Hays
Anne & John Leiserson
Dorothy & Roger Nelson
Anthony Raby
Martha & Arthur Spiess

IN MEMORY OF RUTH WHITE

Town of New London Conservation Commission

IN MEMORY OF JOHN WOODWARD

Charlie & Marion Hafner
Heidelberg Lodge IOOF

MARILYN KIDDER & THE STAFF AT BETTER HOMES & GARDENS MILESTONE

REAL ESTATE (for donating a portion of their sales commissions to Ausbon Sargent)
Anne Marie Appel
Emily Campbell
Donna Forest
Abby Jamieson
Sharon LaVigne
Judy Merrill
Charity Robinson
Jenna Sievers
Jane Snow
Sonja Torgersen
Joan Wallen
Christy Schmidt Stout
Deb Rees

NH CHARITABLE FOUNDATION FUNDS

Barrette Family Fund
Charles & Cynthia Kelsey Fund
Deborah D. Hoover Charitable Fund
Pumpkin Hill Fund

Time is a great gift that helps Ausbon Sargent have the care and personal touch that is essential to a healthy organization. Thank you!

CHATTER PROOF READING

Sue Andrews
Nancy Berger
Marla Binzel
Jan Hostage
Nan Kaplan
Susan M. Knight
Diane Lander
Alice Perry
Elizabeth Stevens

OFFICE VOLUNTEERS & BAKERS

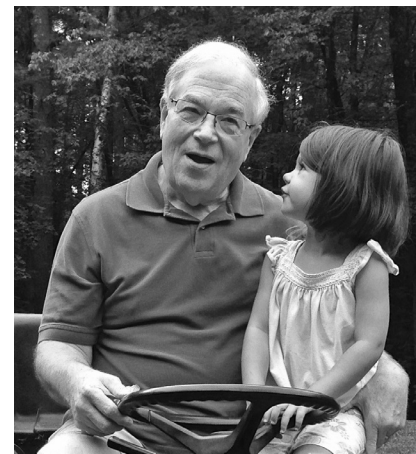
Nick Andrews
Terri Bingham
Marla Binzel
Elizabeth Bowen
Jyl Bradley
Gavin Campbell
Sunny Coady
Don Eberly
Pat Goodlin
Kate Gordon
Ginny Gwynn
Jane Hopwood
Jan Hostage
Susan M. Knight
Diane Lander
Polly Martinson
Alice Perry
Katie & Lyn Potter
Anne Watkins

PHONE-A-THON

Robin Albing
Lisa Andrews
Sue Andrews
Ruth Barney
Chuck Bolduc
Kathy Carroll
Laurie DiClerico
Sue Elliott
Ginny Gwynn
Jeff Hollinger
Marilyn Paradis
Diane Robbins
Suzanne Tether

SPECIAL EVENTS COMMITTEE

Kathleen Belko
Debbie Chrisman
Laura Beth Foster
Joan Gould
Lyn Hopkins
Betsy Lyons
Lynn Mountford
Heidi Saghir



Thank you, Lee Morrill

In the summer of 2012, Lee Morrill, owner of On Track Design, was asked to come help with the layout and design of the "Chatter" newsletter. For the last 11 years (encompassing 23 issues), Lee has been an amazing asset to the Land Trust. He has not only helped with putting together the "Chatter," but has also created brochures, signs, and other marketing pieces. His creative eye, skill, and experience is apparent in all he has done for us. In 2021, Lee indicated that he would like to retire from Chatter to allow him some extra time with his granddaughter, Sadie. This is his last Chatter. We are all so thankful for you, Lee! You have worked with us over the years with patience, humor, and care. Thank you for adding your professional touch to every issue and project, and helping Ausbon Sargent look the best it can!



Town Spotlight

Ausbon Sargent serves 12 towns that make up our Mt. Kearsarge/Ragged/Lake Sunapee Region, including Andover, Bradford, Danbury, Goshen, Grantham, New London, Newbury, Springfield, Sunapee, Sutton, Warner and Wilnot. Since many of our readers may be new to the area or perhaps unfamiliar with the surrounding towns, each upcoming issue will feature a spotlight on a town and its conservation easement history with ASLPT. For many more details on properties we have protected in each town, please visit the Ausbon Sargent website and click on the "properties" section. From there you can choose to learn more about a property by name, or search an entire town to see what has been protected there.



Town of Andover, NH

Andover was incorporated in 1779

and has a population (census 2020) of 2,406.

It is 41 square miles in size, 0.89 square miles of that is water.

Andover is home to the villages of:

Cilleyville, Potter Place, East Andover, and West Andover.

Andover is also home to:

Ragged Mountain and Proctor Academy.

Ausbon Sargent Protected Land:

15 conserved properties, totaling 1,082.18 acres:
(Roughly 4% of the town)

4 are owned by Ausbon Sargent.

11 are conservation easements with private landowners.

Other Protected Land:

Yes! Other lands in Andover are protected through Federal, State and Municipal easements/agreements.

Visit the Andover town website and click on the Conservation Commission for all the details!



The Hersey, Roger/Hersey easement is 54.25 acres in size and was completed in October, 2010.

<< *Roby and McLeod Preserve - Roby (41.98 ac) and McLeod Preserve (24.72 ac) were protected in 2017 and 2016 respectively.*

Stewardship Wish List

Each year, Ausbon Sargent is required to monitor over 160 protected properties, including land we own and land on which we hold easements. Along with monitoring, we manage our own properties and trails with volunteers. Stewardship requires the use of tools and materials that either get used up each year or need replacement after years of use.

If you would like to help us with any items below, please send along a note with your donation or give us a call to let us know your intent. Gift certificates in any denomination to Rocky's Ace Hardware or Belletetes are also helpful to purchase tools and materials.

Cedar birdhouse for habitat enhancement

\$20

Flagging for volunteers to use while monitoring

\$60

Paint to assist in the maintenance of boundary markers

\$100

Please contact our Stewardship Manager, Anne Payeur (apayeur@ausbonsargent.org), to get details on any of the above items, or other items we may need. Thank you!



Congratulations to Katie Potter!

In 2016 the Land Trust advertised an open volunteer position for a bi-weekly recycler. 6th grader, Katie Potter and her mom, stopped by the office after seeing our plea for help in the Chatter. Since then, Katie has been coming every other week to take our recyclables to the New London Transfer Station. The Kearsarge Regional High School requires each graduating senior to donate 20 hours of volunteer time before they graduate. Katie has blown that requirement away with providing a whopping 110 hours of her time to ASLPT! On June 10th Katie graduated from KRHS and plans to attend Lasell University in Massachusetts and major in Hospitality Management. We thank her for her service to the Land Trust and wish her the best of luck in college and beyond!



Katie in the 6th grade when she began volunteering, and in the 12th grade at her last pick-up!



If YOU or anyone you know would be interested in taking over this volunteer position, please contact our office. The perfect candidate would be able to come into the office once every two weeks during regular hours, and transport our recycling to any local transfer station.



<< Sue Andrews and Alice Perry, 2023 Volunteer Party.

Volunteer Party

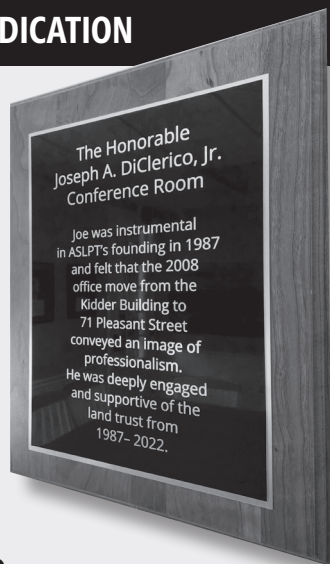
On May 24th, Ausbon Sargent Board and Staff welcomed over 65 volunteers to a special gathering at the Lake Sunapee Protective Association's Center for Lake Studies. It was a fun event with food, drink and remarks from Lisa Andrews (Board Chair), and Debbie Stanley (retiring Executive Director). It was also a chance for many to meet Ben Wallace, the incoming Executive Director. Volunteers provided wonderful energy and conversation that filled the room. This gathering is a special tradition that our volunteers, board and staff look forward to all year.

We are thankful for all our volunteers and the many ways they contribute to the success of Ausbon Sargent!



Debbie Stanley thanking the volunteers, board and staff for their work at the Land Trust.

A SPECIAL DEDICATION



Joe DiClerico

In January 2023 the Board of Trustees voted unanimously to dedicate the Ausbon Sargent conference room in memory of Joe DiClerico. Joe was a past board member and was a strong supporter of the land trust for 35 years. The decision to honor Joe in this way was an easy one, perpetuated by his careful thought and reasonable outlook on topics brought before the Trustees. Joe's leadership and strong belief in the mission of Ausbon Sargent were witnessed time and time again around the table of the board room. He will be remembered always.



Join our email list and/or follow us on Facebook and Instagram to find out when new hikes are added to our schedule! A fall hike on the new Bradford Bog Headwaters property is in the works. Hope to see you there!

Calendar of EVENTS



Courtesy Jen Esten

Please join us for a hike or event this summer or fall!

Please contact: kheath@ausbonsargent.org
for more information or to register!

July 11, 2023: 9am – 11am
Star Lake Farm hike
Springfield

August 1, 2023:
Dragonfly Walk at
Russell Pond/O'Neil Property
Sutton

August 16, 2023: 2pm – 4pm
Pound Woodland Preserve hike
Wilmot

Bradford Bog Headwaters
Property hike-TBA

October 22, 2023: 3pm
Annual Meeting
at the New London Historical Society

December 4, 2023
5:30pm – 7:30pm
Holiday Party
(Location TBD)

Hikes are free and open to all, however
Registration is required.

Please contact: kheath@ausbonsargent.org
for more information or to register!

The Importance of Legacy Gifts

by Robin Albing

Ausbon Sargent Land Preservation Trust is committed to conserving the land we need and love for generations to come, ensuring that the places we save today are protected forever.

Your legacy gift (through your will or trust) is an important way to provide for family and friends, plan the management and disposition of your estate and ensure that your passion for land conservation is permanently reflected in the beautiful places that surround us here in New Hampshire. It is a simple, yet powerful way to ensure that future generations can enjoy the precious lands and waters that you cherish today.

Ausbon Sargent has long been the recipient of legacy giving, stretching back to our inception over 35 years ago. We receive legacy gifts every year, thanks to the forward-thinking generosity of our donors. The lives of these generous folks are uplifting and inspiring. Here is just one of their stories:

Ruth White was a well-known and respected member of the New London community. She was a lover of nature and hiked all of NH's 4000 footers while in her 50s and Mt. Lafayette for her 80th birthday. She and her husband, George, travelled extensively - kayaking, canoeing, hiking, and geocaching, while searching for birds and wildlife to photograph. When Ruth passed away in 2022, in keeping with her wishes, her sons Eric and David made a generous gift to the Land Action Fund at Ausbon Sargent in Ruth's name. The Fund was created for times when the Land Trust is faced with a critical need for interim financing or if there is a shortfall in reaching a fundraising goal. This is only used in instances where the property has exceptional



Ruth White

natural resources that need to be protected. Thanks to Ruth White, Ausbon Sargent is able to act quickly when an important opportunity arises; the funds are there and the mission can continue.

Ruth White's appreciation for nature lives on. Like Ruth, you, too, can make a legacy gift to Ausbon Sargent because our planet cannot provide us with breathable air and drinkable water unless enough land is preserved for it to do so. Ausbon Sargent was the foundation for Ruth's charitable giving—and it can also be yours.

Robin Albing is a member of the Development Committee for Ausbon Sargent. After a long business career in New York and New Jersey, she now resides full-time on Little Lake Sunapee and works at Dartmouth College. Although Robin loves to travel and has visited over 60 countries on six continents, her favorite places in the world are the lakes and mountains of New Hampshire.



*The people listed here
have let us know that they
included Ausbon Sargent
in their estate plans
If you would like more
information about the
Acorn Society, please contact
our Executive Director
Ben Wallace at
603-526-6555 or
bwallace@ausbonsargent.org*

*Acorn Society Members
may remain anonymous
if they prefer.*

Rita and James Abbott[^]
Sue Andrews
Anonymous (13)
Rich and Heidi Anderson
Theodore Bacon, Jr.[^]
Kathy and David Bashaw
David and Brenda Beardsley
Ann Bemis[^]
Seth Benowitz
Marla Binzel
Peter Bloch & Kathy Lowe Bloch
Catherine Bogardus[^]
Robert and Sandra Brown
David and Pamela Carle
Roland Carreker[^]
Michael and Susan Chiarella
Naia Conrad[^]
Emma Crane
Chris and Janice Cundey
Rick Davies
Ann and Marc Davis
Tim and Lorraine Davis
Anne Dewey[^]
Laurie and Joe[^] DiClerico
Neil Donnenfeld
Barbara Faughnan
John and Maggie Ford
John Garvey and
Cotton Cleveland
Gerald and Jane Gold
George Green[^]
Martha J Harris
Tom and Marilyn Hill
Alan Jones[^]
Dr. Charles Kane[^]
David Karrick
Betsy Lee[^]
Doug and Nancy Lyon[^]
Andrew J. McDonald[^]
Genevieve Millar[^]
Dave and Bev Payne
Alan Peterson
Rachel and Myron[^] Rosenblum
Murray and Rachel Sargent[^]
John and Sage Scott
Robert Silva
John Solodar &
Nancy Denny Solodar
Virginia Anthony Soule[^]
Deborah and Peter Stanley
Nathaniel Stevens
Pat Thornton[^]
John Tilson
Libby Trayner[^]
Eric Unger[^]
Betsy Denny Warner
Mary-Seymour "Sissy" Westcoat[^]
Ruth White[^]
[^]denotes deceased



71 Pleasant Street
P.O. Box 2040
New London
New Hampshire
03257-2040
603.526.6555

STAFF

- (From left to right)*
- Glennie LeBaron**
Stewardship & Outreach Assistant
- Anne Payeur**
Stewardship Manager
- Susie Moore**
Bookkeeper
- Kristy Heath**
Development and Communications Coordinator
- Andy Deegan**
Land Protection Specialist
- Jen Deasy**
Operations Manager
- Ben Wallace**
Executive Director



OFFICERS

- Chair: Lisa Andrews
- Vice-Chair: Bob Zeller
- Secretary: Susan Ellison
- Treasurer: Mike Quinn

TRUSTEES

- Aimee Ayers
- Chuck Bolduc
- Laurie DiClerico
- Ginny Gwynn
- Jeff Hollinger
- Deborah Lang
- Russ Moore
- Diane Robbins
- Steve Root

Special Thanks to all of our guest authors!
Newsletter layout & design by Lee T. Morrill, On Track Design.

Echo Communications, Inc. prints the Chatter Newsletter on FSC certified, 100% post-consumer recycled paper that is processed chlorine free. The paper is manufactured using renewable biogas energy. The printing process uses soy offset inks in an alcohol-free press environment.

Please become a Member!

We welcome you to join us and become part of the living legacy created through land conservation!
You can find out more about us on our website at: ausbonsargent.org

Please make checks payable to: **Ausbon Sargent** and mail to: **P.O. Box 2040, New London, NH 03257-2040**

or make your secure donation on the Ausbon Sargent website or over the phone at: **603.526.6555**

- \$10,000+ Ausbon Sargent Society
- \$5,000+ Legacy Circle
- \$2,500+ Leadership Circle
- \$1,000+ Benefactor
- \$500+ Patron
- \$250+ Steward
- \$150+ Protector
- \$60+ Advocate
- Other \$ _____



Name _____

Address _____

Phone _____ E-mail _____

Donations to Ausbon Sargent are tax deductible as provided by Section 170 of the Internal Revenue Code. 07/2023

