



King Hill Recreation Area Sutton Conservation Commission

Historic King Ridge Ski Trails

Backcountry Ski Trails

1 - Lobster Quadrille	0.67 mi
2 - Jabberwocky	0.76 mi
3 - Brillig's Run	0.97 mi
7 - Bill the Lizard	0.16 mi
8 - The Doormouse	0.36 mi
9 - And the Carpenter	0.20 mi
10 - The Walrus	0.35 mi
12 - The White Rabbit	0.34 mi
13 - Queen's Run	0.12 mi
19 - The Mock Turtle	0.25 mi

Trails Not Maintained For Recreation

14 - The Knave of Hearts	0.17 mi
15 - The Mad Hatter	0.21 mi
16 - The March Hare	0.22 mi
17 - King's Run East	0.22 mi
18 - King's Run	0.24 mi
T - Northside T-Bar	0.22 mi

Hiking Trails

Maintained

Nichols Trail	1.04 mi
Penacook Path	0.88 mi
Bean Quarry Trail	0.77 mi
Hominy Pot Trail	0.66 mi
Felch Trail	0.59 mi
Lyon Brook Trail	0.51 mi
White Rabbit Trail	0.34 mi
Putnam Trail	0.23 mi
Genes Walk	0.12 mi

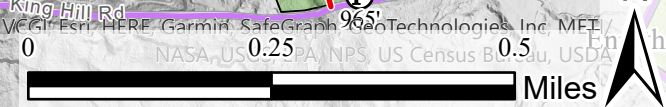
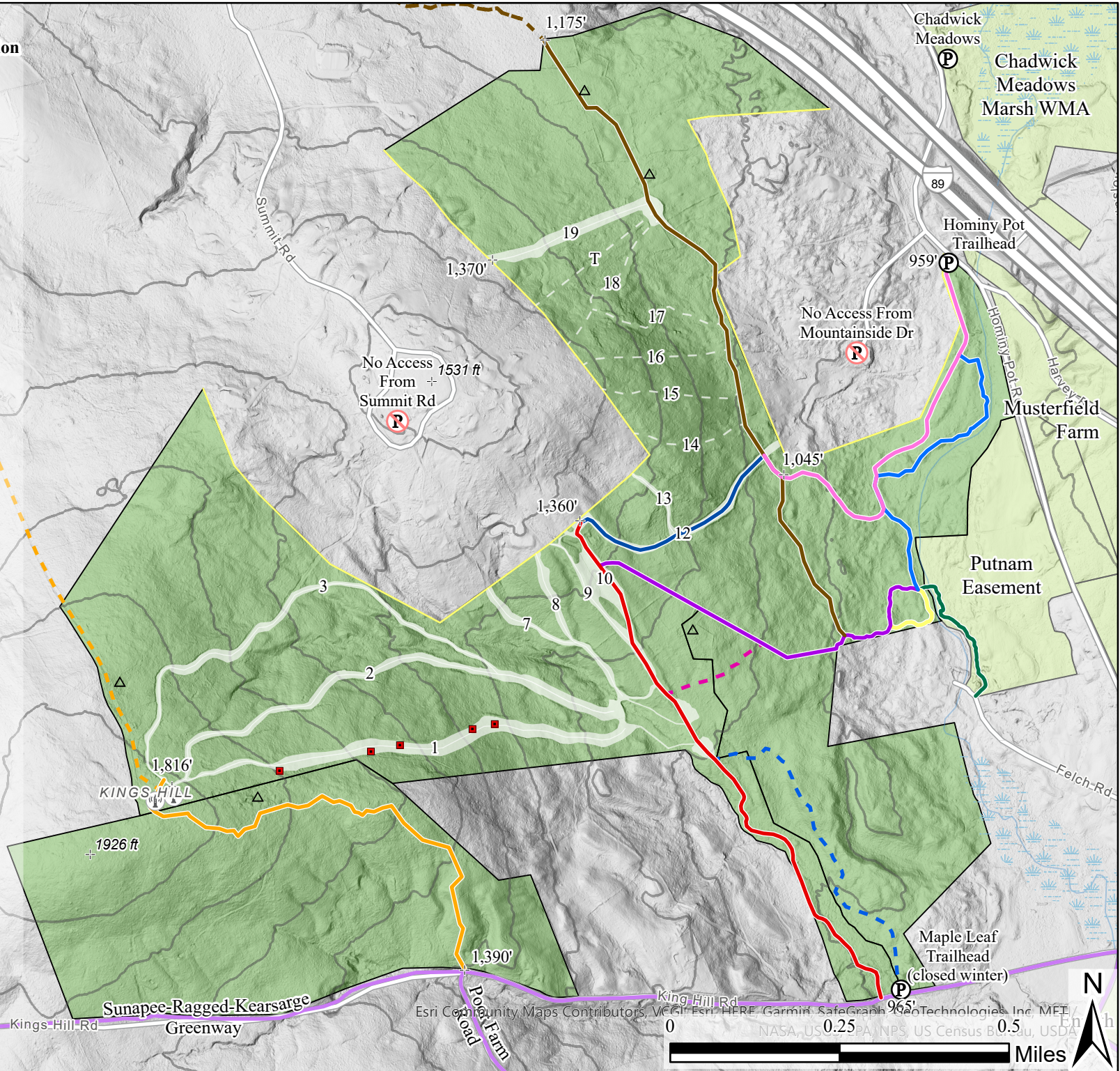
Unmaintained / Future

Nichols Trail Extension	0.82 mi
Quarry Walk	0.67 mi
Maple Leaf Path	0.53 mi
Felch-Penacook Cut-Off	0.16 mi
Other Hiking Trails	

Contour Lines

- 100-Foot
- Mountainside Private Property

Last Update: 3/10/2023
Map by Charles Bolduc
Sutton Conservation Commission



Esri, Community Maps Contributors, VCC, Esri, HERE, Garmin, SafeGraph, DeLorme, GeoTechnology, Inc, MET, NASA, US EPA, NPS, US Census Bureau, USDA