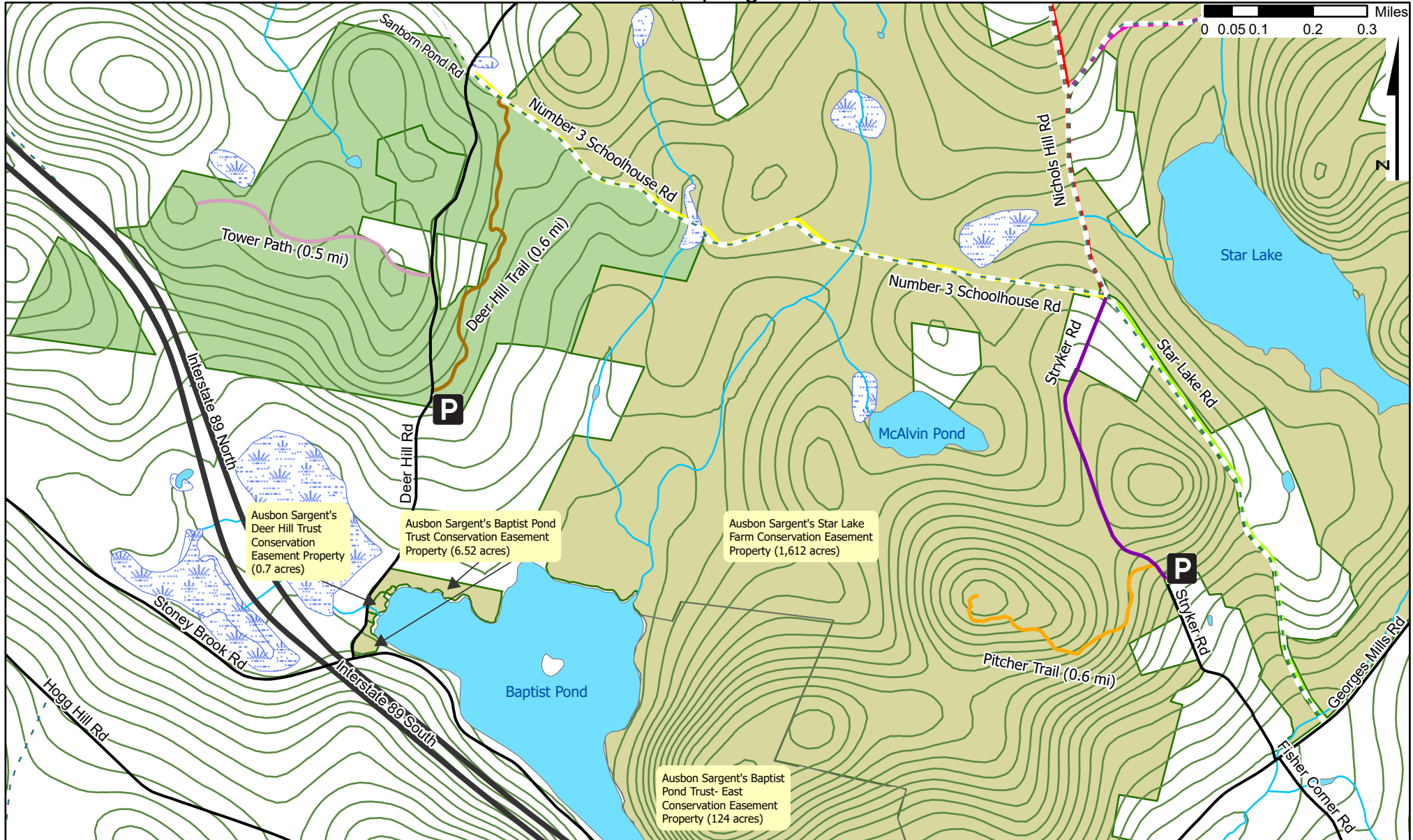


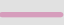





Hayes/Deer Hill Trust Conservation Easement Trails

267 acres, Springfield, NH



Legend

-  Hayes/Deer Hill Trust CE
-  Deer Hill Trail (0.6 mi)
-  Tower Path (0.5 mi)
-  Pitcher Hill Trail (0.6 mi)
-  Class VI & Private Roads
-  Roads

Deer Hill Trail:

Open for foot traffic, this wide path follows the contour of the hillside through mixed forests. There is a fork halfway along the trail, the right is a short detour that quickly rejoins. The trail connects to Number 3 Schoolhouse Rd, which is privately maintained and open for low impact recreation. Please see Star Lake Conservation Easement Trails map for other trails in the area.

Tower Path:

Beginning at the gate, take the wide access road used to reach the tower as a way to see the interior of the property. The well-graded path makes Tower Path great for winter use. Please park at the lower trailhead and walk up to the gate.

Directions from I-89N exit 12A:

Turn left on Georges Mill Rd, then right onto Stoney Brook Road for 1.5 miles. Turn right onto Deer Hill Rd for 0.6 miles past the smiley face rock and summer camp. The trailhead is just past the camp buildings behind a metal gate with a Deer Hill Farm sign. There is parking for two cars on the shoulder.



The Hayes/Deer Hill Trust CE is open for low-impact pedestrian activities only

Visit our website for more!
ausbonsargent.org/trails

All representations of property boundaries are approximate. Map Updated December 2023