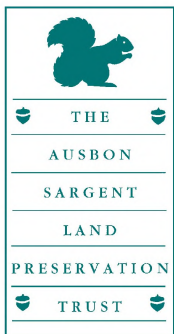
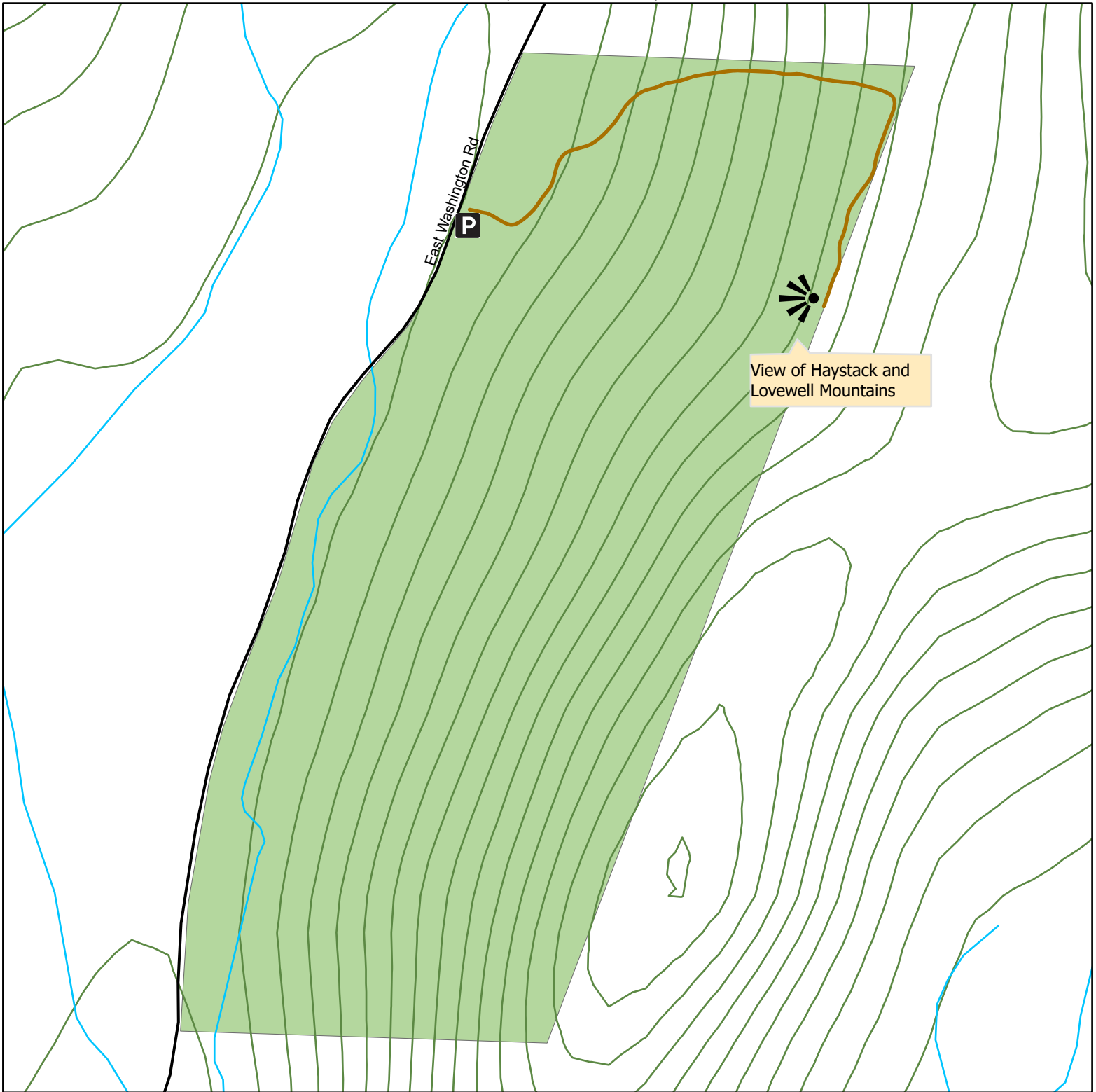


Bradford Bog Headwaters

71 acres, Bradford, NH



Legend

- Roads
- Stream/River
- Trail (0.4 mi.)



LCHIP Land & Community Heritage Investment Program



All representations of property boundaries are approximate.
Map Updated October 2023

ABOUT

Protected in 2023, this vigorous regenerating woodland area, which is valuable to threatened wildlife, features pristine waters that flow into a nearby Abenaki ancient healing springs site, the Atlantic white cedar bog and wildflower sanctuary, and the Merrimack river watershed. Rejuvenating forest and the important waterbody expands ideal habitat for avian species in greatest need of conservation in New Hampshire.



The project was completed with assistance from conservation buyer, Mike Andrews, who purchased the property and held title until the Land Trust could raise the funds. This Property is protected with assistance from the New Hampshire Land and Community Heritage Investment Program and the NH "Moose Plate" grant. Transaction funding for the project was provided by the Quabbin-to-Cardigan Partnership, a public/private effort to protect the Monadnock Highlands of western New Hampshire and north central Massachusetts. To learn more visit www.q2cpartnership.org.

Additional grants were provided from the Fields Pond Foundation, Burton Morgan Foundation, and another anonymous grantor. Further support was provided by the Town of Bradford Conservation Commission, Rural Heritage Connection of Bradford, and many individual donations by Ausbon Sargent members and friends.

THE AUSBON SARGENT MISSION

Helping preserve the rural landscape of the Mt. Kearsarge/Ragged/Lake Sunapee region.

Serving the towns of: Andover, Bradford, Danbury, Goshen, Grantham, New London, Newbury, Springfield, Sunapee, Sutton, Warner and Wilmot

TRAILS

From the pullout at East Washington Road walk past the boulders and onto the landing. Follow the "Trail" sign to the left. Visitors can take the 0.8-mile total out and back trail to a view of Haystack and Lovewell Mountains. This trail is ranked difficult due to the steep slope and uneven footpath.

Did you know?

Beavers have taken advantage of water flowing from Haystack Mountain to build a series of dams; the ponds they've created host Wood Ducks, migrating waterfowl and the American Toad. Moose moving through may browse on sapling twigs and plunge into the refreshing pond. A rocky cliff offers possible habitat for bobcats; dense thickets below allow a hiding spot for their favorite prey, the Snowshoe Hare.



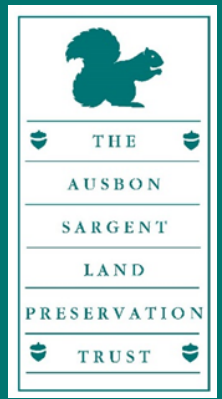
DIRECTIONS

From the intersection of NH Rte 103 and Center Road in Bradford turn onto Center Road, go under the covered bridge and in a half mile turn right to stay on Center Road for an additional two miles. Turn right onto W Rd and follow for two miles. Turn left onto East Washington Rd. After approximately two miles the access area for parking will be on your left.

CONTACT US :

Ausbon Sargent Land Preservation Trust
www.ausbonsargent.org
71 Pleasant Street/PO Box 2040
New London, NH 03257
info@ausbonsargent.org - (603)-526-6555

Bradford Bog Headwaters



71 acres, Bradford, NH

