

# HISTORY

Star Lake Farm in Springfield, NH is a collection of over 1,700 acres made up of 14 former farms. In March of 2010 1,559 acres were placed under conservation easement. One year later, owner Dan Thorne added another 53 acres to the easement, enlarging the total conserved area to 1,612 acres. The property contains four peaks over 1,500 feet in elevation, making it visible from many areas of the region.

The easement protects the working farm and forest, as well as the water resources and recreational uses of the property. Star Lake (65 acres) and McAlvin Pond (10 acres) are encompassed by the easement, and the property has 1,200 feet of frontage on Baptist Pond. Protecting these bodies of water that feed into Lake Sunapee, aid in the protection of its water quality. The wetlands on the property provide important wildlife habitat, filter drinking water, and provide flood control.

The working landscape of forests and over 100 acres of agricultural fields are responsibly managed. Current management includes raising cattle, hay production, and sustainable forest management under the guidance of a professional licensed forester. Periodic harvesting produces wood for local mills. Actively managed sugar maple stands produce sap for maple syrup produced at the farm's sugar house.

Wildlife is abundant on the property, and includes black bear, moose, coyote, deer, loons, hawks, turkeys, song birds, turtles, snakes, and salamanders. Significant portions of the property have been identified as "Highest Ranked Habitat in the State or Biological Region" by NH Fish and Game in the NH Wildlife Action Plan.

# TRAILS

Although under a conservation easement, the entirety of Star Lake Farm is not open to the public. In addition to the Pitcher Hill Trail, the Sunapee-Ragged-Kearsarge Greenway (SRKG) trail passes through the property on former Class VI roads open to the public.



## DIRECTIONS TO THE PITCHER HILL TRAIL

**From I-89N:** Take Exit 12A, turn Right onto Georges Mills Rd, continue 0.6 miles to Stryker Rd, turn LEFT, continue on Stryker Rd..

**From Rte 11:** Turn onto Springfield Rd, just west of Otter Pond, continue 1.4 miles to Stryker Rd, turn LEFT, continue on Stryker Rd.

**From Rte 114:** Turn onto Georges Mills Rd, continue 0.9 mile passing the Star Lake Farm entrance, to Stryker Rd, turn RIGHT, and continue on Stryker Rd.

## THE AUSBON SARGENT MISSION

Helping preserve the rural landscape of the Mt. Kearsarge/Ragged/Lake Sunapee region.

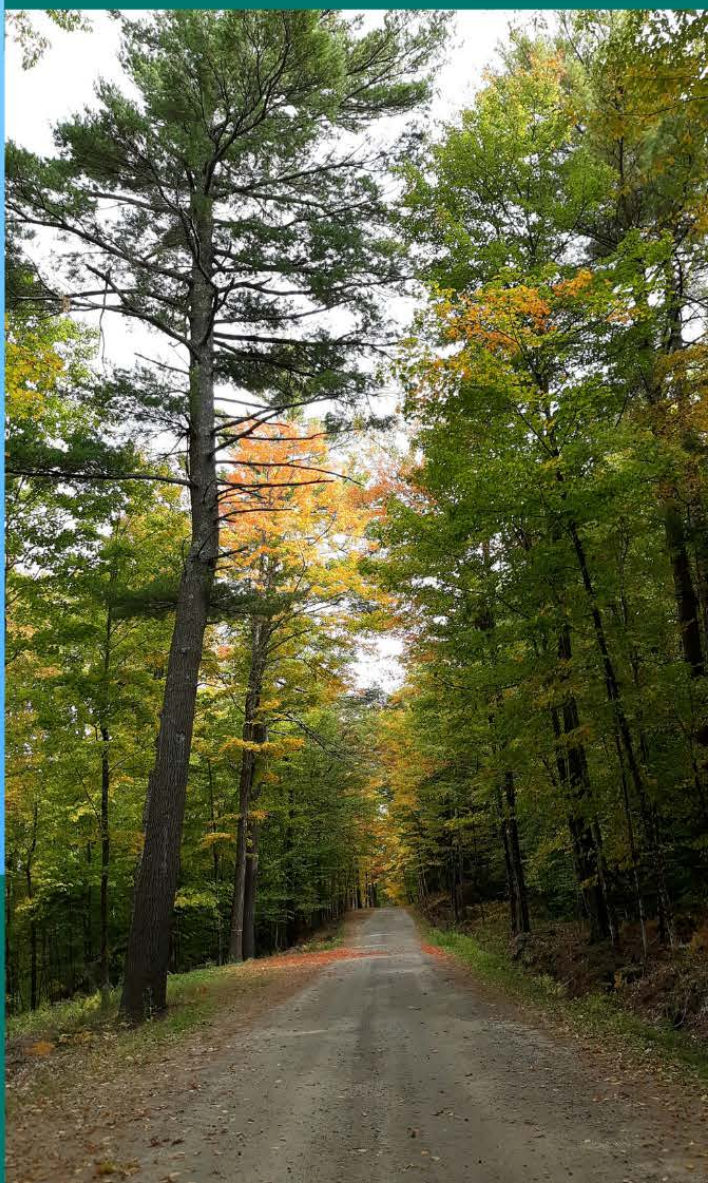
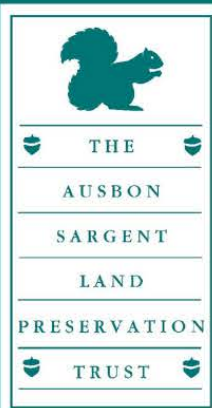
Serving the towns of: Andover, Bradford, Danbury, Goshen, Grantham, New London, Newbury, Springfield, Sunapee, Sutton, Warner and Wilmot

## CONTACT US

Ausbon Sargent Land Preservation Trust  
www.ausbonsargent.org  
71 Pleasant Street/PO Box 2040  
New London, NH 03257  
info@ausbonsargent.org - 603-526-6555

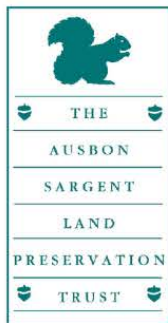
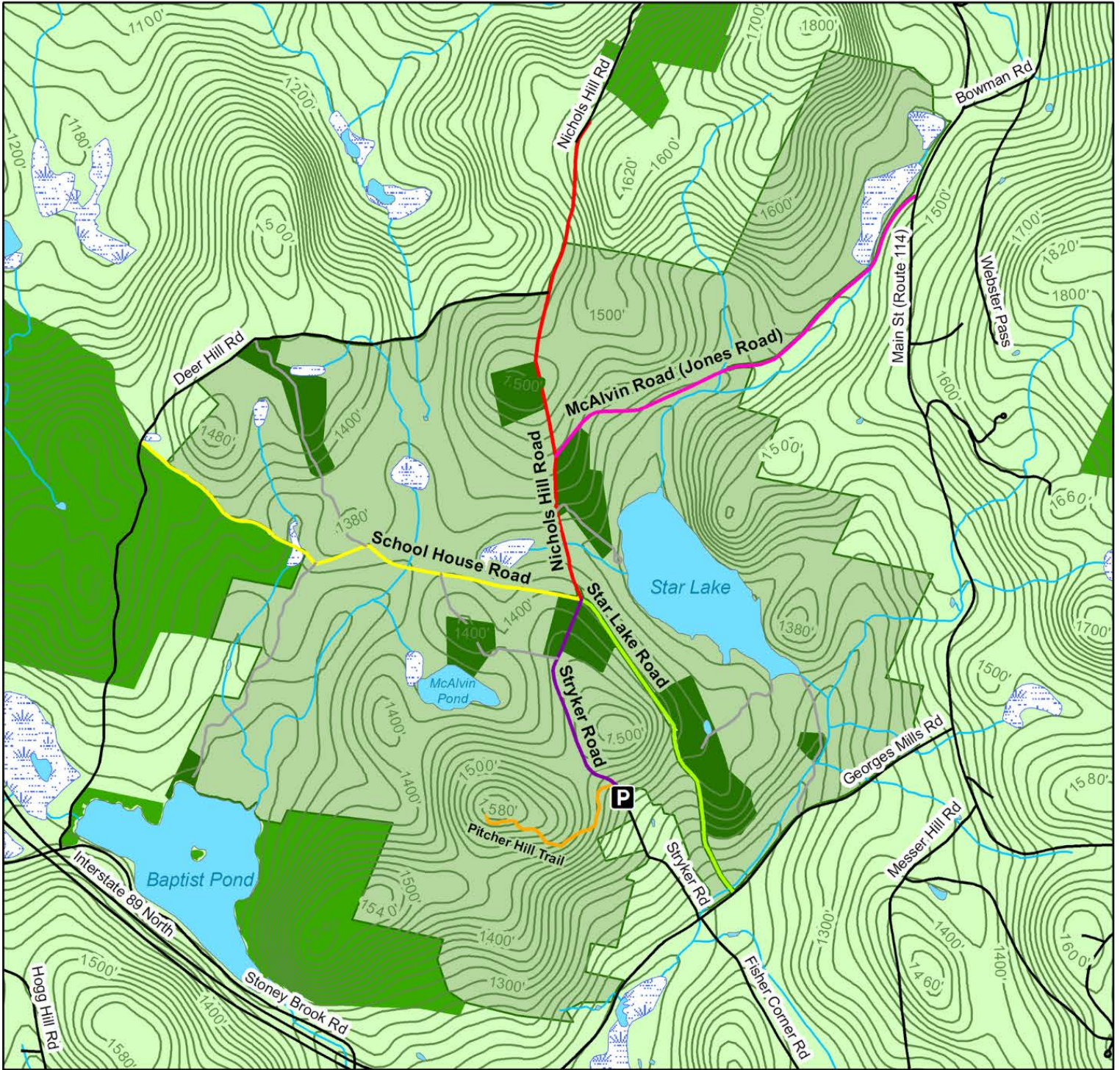
# STAR LAKE FARM

## PITCHER HILL TRAIL



# Star Lake Conservation Easement Trails

1,612 acres, Springfield, NH



## Legend

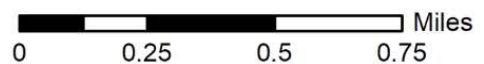
### Trails

- McAlvin Road (Jones Road) (1.2 mi)
- Nichols Hill Road (1.3 mi)
- School House Road (1.3 mi)
- Star Lake Road (0.9 mi)
- Stryker Road (0.6 mi)
- Pitcher Hill Trail (0.6 mi)

- Roads
- Private Roads
- Stream/River
- Lake/Pond
- ▨ Swamp/Marsh
- Other Conserved Lands

### Star Lake Properties

- Excluded Areas
- Easement Property



All representations of property boundaries are approximate.  
Map Updated February 2023